

# Service Technical Information

MODEL NO. AM-C80 / F80 / F75
SUBJECT Come-off of screws fixing the mechanism chassis

REF.No. :G - A0 - 065 - E0

DATE :26. SEP. 2000

<CONTENTS>

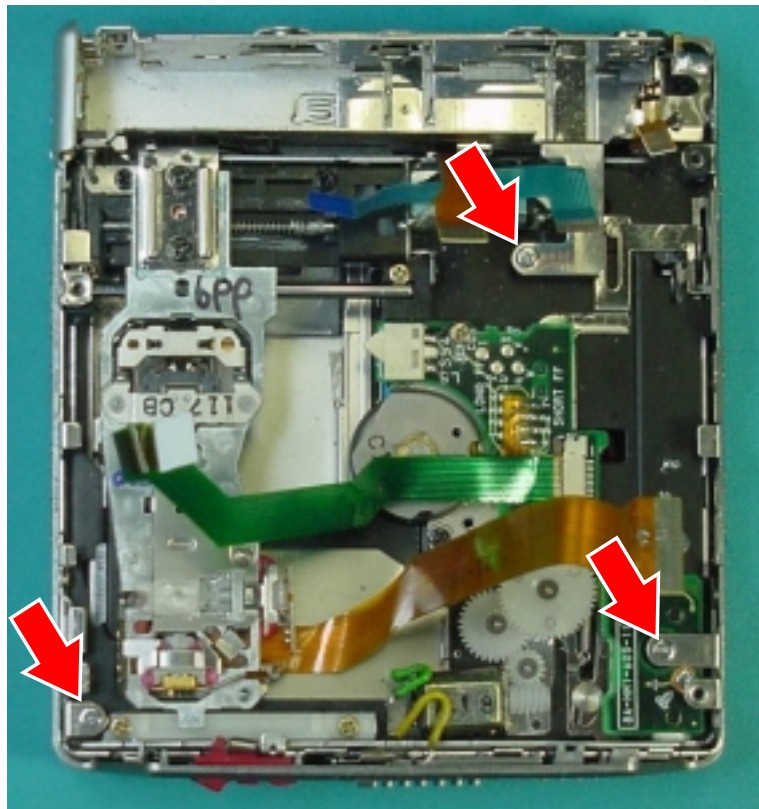
In the above models, if one of the three screws that is fixing the mechanism was loose, the screw may cause an operation failure.

If any of the screws has come off or is loosened, take the following procedure:

<COUNTERMEASURE>

The following figure shows the positions of the three screws fixing the mechanism chassis. Change all the three screws to the locking screws of the parts number in the table below.

\*When mounting the locking screws, confirm that the bosses for screws of the mechanism chassis have fit into the screw holes in the frame.



Exploded view (screws indicated by the arrows)

Ref.	Parts Code	Description	Remarks
-	87-HM1-243-010	S-SCREW, 1.4-1.4 CRNL	-

G	R	Code No.	Access Code	Modified Ser. No.	Parts Schedule
-	-	-	-	-	-