

# Service Technical Information

MODEL NO. AM-HX50 / HX55
SUBJECT Extension jig PWB MAIN

REF.No. :G - 99 - 053 - E0

DATE :05. NOV. 1999

<CONTENTS>

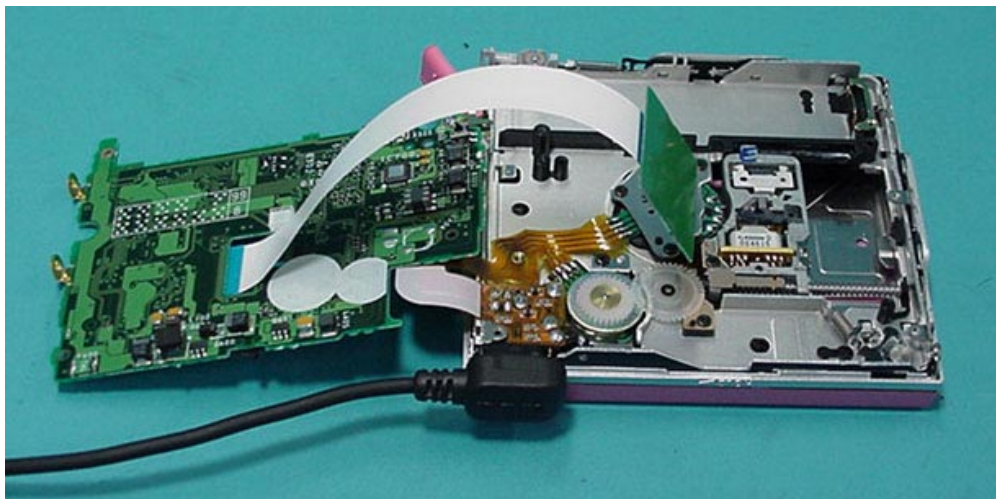
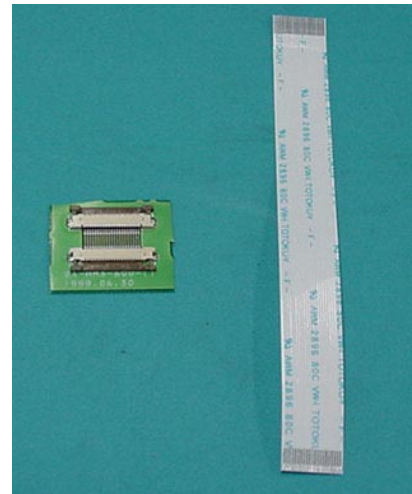
The jig allows to take the service position easy.  
It enables easy checking on operations of mechanism and electrical circuits.

Insert FFC to the connector of jig C.B. for extending the pickup FFC.

Left: PWB ASSY (JIG AM-HX50) <Figure on the right>  
Right: FFC 21P,0.5,100MM

<NOTE>

The jig extends the pickup FCC.  
Do not perform adjustment of a unit using this jig.



Ref.	Parts Code	Description	Remarks
-	SV-J00-070-010	PWB ASSY(JIG,AM-HX50)	-
-	SV-J00-074-010	FFC,21P,0.5,100MM	-

G	R	Code No.	Access Code	Modified Ser. No.	Parts Schedule
-	-	-	-	-	11.Nov.1999