

MDX-C6500X

SONY®

SERVICE MANUAL

US Model
Canadian Model
E Model

SUPPLEMENT-1

File this supplement with the service manual.

Subject : 1. Change of Illumination Color
2. Change of Main and Display Boards

(ECN-CSA02152, CSA02456, CSA02457)

1. Change of Illumination Color

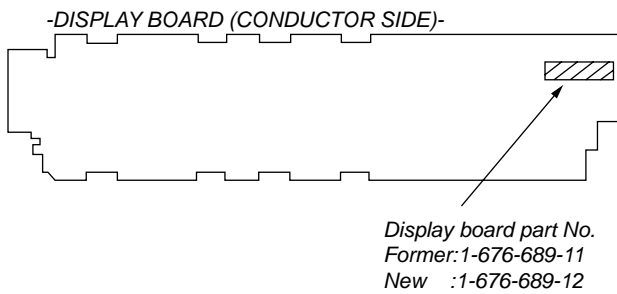
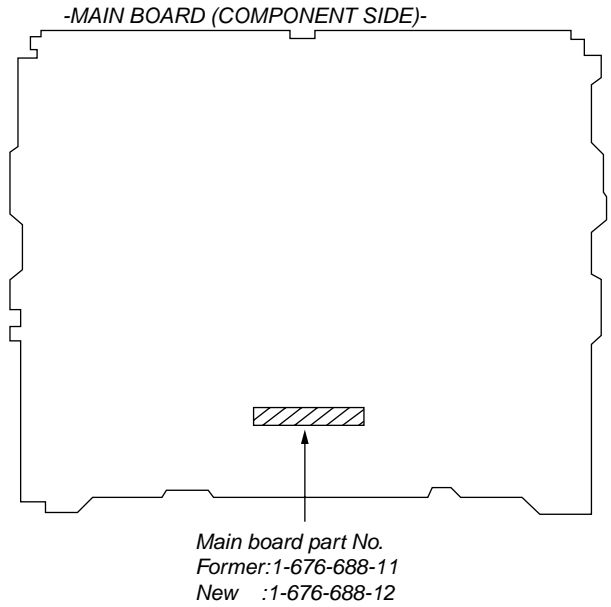
Illumination color of the EJECT button (relay board) at the disc insertion part was changed from green to red.

Page	GREEN				RED		
	Ref. No.	Part No.	Description	Remark	Part No.	Description	Remark
55	LED905	8-719-033-14	LED CL-170PG-CD-T (MD WINDOW)		8-719-078-39	LED CL-170SR-CD-T (MD WINDOW)	
	LED906	8-719-033-14	LED CL-170PG-CD-T (MD WINDOW)		8-719-078-39	LED CL-170SR-CD-T (MD WINDOW)	
	LSW916	1-771-609-11	SWITCH, TACTILE (WITH LED) (▲)		1-771-883-11	SWITCH, TACTILE (WITH LED) (▲)	

2. Change of Main and Display Boards

When performing service and inspection, check the part number of the main and display boards.

2-1. Discrimination



2-2. Diagrams

THIS NOTE IS COMMON FOR PRINTED WIRING BOARDS AND SCHEMATIC DIAGRAMS.
(In addition to this, the necessary note is printed in each block.)

- Abbreviation
CND : Canadian model.
- () : Refer to page of supplement-1.
- < > : Refer to page of service manual.

for schematic diagram:

- All capacitors are in μF unless otherwise noted. pF : $\mu\mu\text{F}$
50 WV or less are not indicated except for electrolytics and tantalums.
- All resistors are in Ω and $1/4\text{W}$ or less unless otherwise specified.
- % : indicates tolerance.
- Δ : internal component.
- \square : panel designation.
- **B+** : B+ Line.
- Power voltage is dc 14.4V and fed with regulated dc power supply from ACC and BATT cords.
- Voltages are taken with a VOM (Input impedance 10 M Ω). Voltage variations may be noted due to normal production tolerances.
- Waveforms are taken with an oscilloscope. Voltage variations may be noted due to normal production tolerances.
- Circled numbers refer to waveforms.
- Signal path.
 - \Rightarrow : FM
 - \Rightarrow : AM
 - \Rightarrow : MD

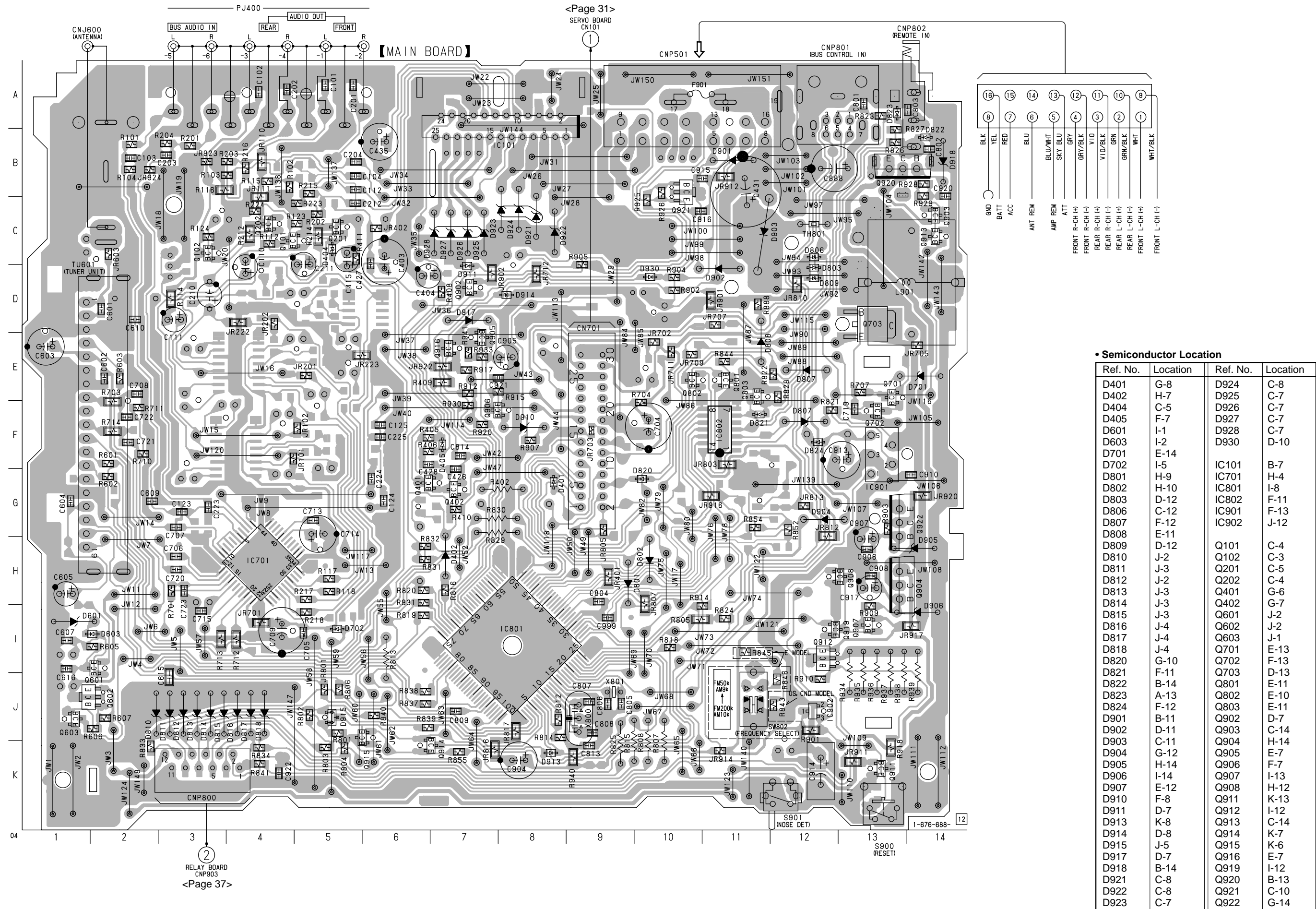
for printed wiring boards:

- \circ : parts extracted from the component side.
- --- : parts extracted from the conductor side.
- \circ : Through hole.
- \dots : Pattern from the side which enables seeing. (The other layer's patterns are not indicated.)

Caution:

Pattern face side: Parts on the pattern face side seen from the (Side B) pattern face are indicated.
Parts face side: Parts on the parts face side seen from the (Side A) parts face are indicated.

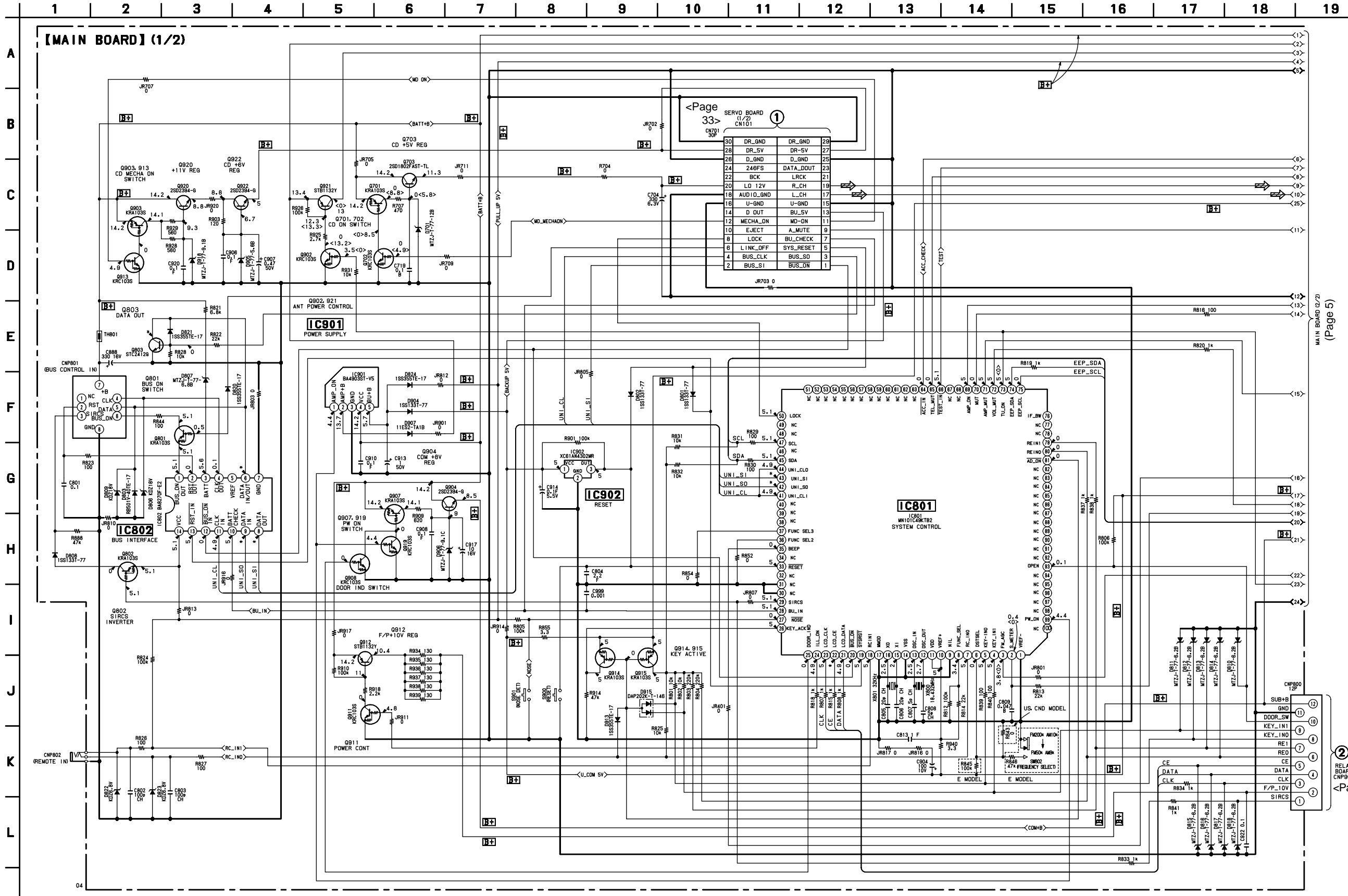
• PRINTED WIRING BOARD — MAIN SECTION —



• Semiconductor Location

Ref. No.	Location	Ref. No.	Location
D401	G-8	D924	C-8
D402	H-7	D925	C-7
D404	C-5	D926	C-7
D405	F-7	D927	C-7
D601	I-1	D928	C-7
D603	I-2	D930	D-10
D701	E-14		
D702	I-5	IC101	B-7
D801	H-9	IC701	H-4
D802	H-10	IC801	I-8
D803	D-12	IC802	F-11
D806	C-12	IC901	F-13
D807	F-12	IC902	J-12
D808	E-11		
D809	D-12	Q101	C-4
D810	J-2	Q102	C-3
D811	J-3	Q201	C-5
D812	J-2	Q202	C-4
D813	J-3	Q401	G-6
D814	J-3	Q402	G-7
D815	J-3	Q601	J-2
D816	J-4	Q602	J-2
D817	J-4	Q603	J-1
D818	J-4	Q701	E-13
D820	G-10	Q702	F-13
D821	F-11	Q703	D-13
D822	B-14	Q801	E-11
D823	A-13	Q802	E-10
D824	F-12	Q803	E-11
D901	B-11	Q902	D-7
D902	D-11	Q903	C-14
D903	C-11	Q904	H-14
D904	G-12	Q905	E-7
D905	H-14	Q906	F-7
D906	I-14	Q907	I-13
D907	E-12	Q908	H-12
D910	F-8	Q911	K-13
D911	D-7	Q912	I-12
D913	K-8	Q913	C-14
D914	D-8	Q914	K-7
D915	J-5	Q915	K-6
D917	D-7	Q916	E-7
D918	B-14	Q919	I-12
D921	C-8	Q920	B-13
D922	C-8	Q921	C-10
D923	C-7	Q922	G-14

• SCHEMATIC DIAGRAM — MAIN SECTION (1/2) — • Refer to page 44 of Service manual for IC Block Diagrams.

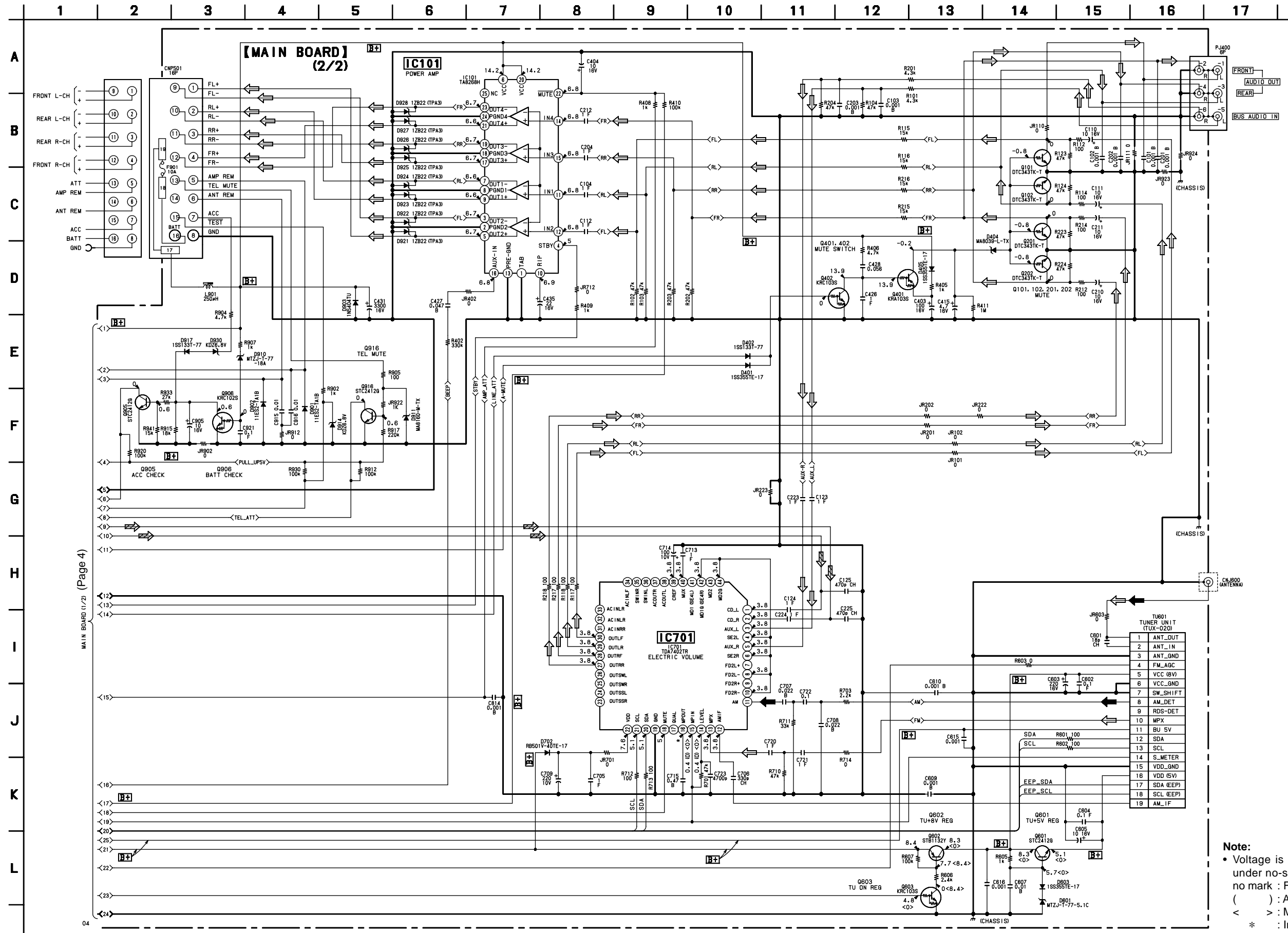


MAIN BOARD (2/2) (Page 5)

RELAY BOARD CNP903 (Page 38)

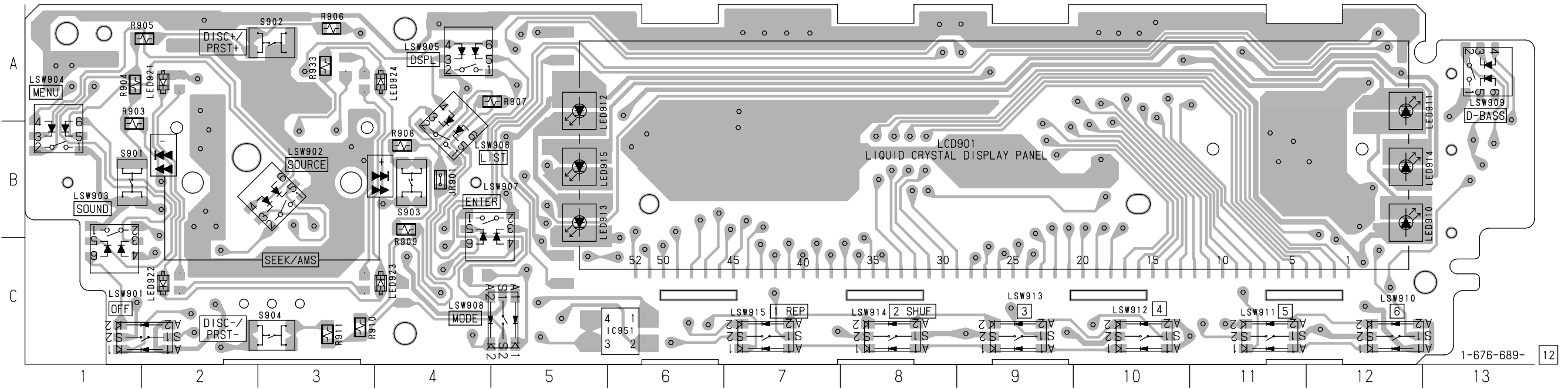
Note:
 • Voltage is dc with respect to ground under no-signal (detuned) condition.
 no mark : FM
 () : AM
 < > : MD PLAY
 * : Impossible to measure

• SCHEMATIC DIAGRAM — MAIN SECTION (2/2) — • Refer to page 45 of Service Manual for IC Block Diagrams.

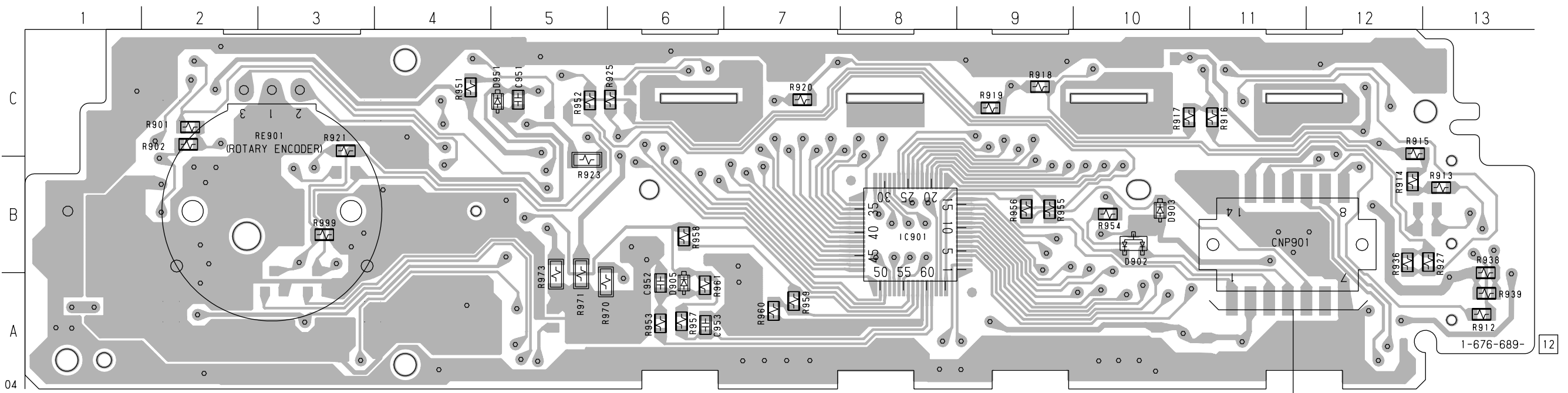


• PRINTED WIRING BOARD — DISPLAY SECTION —

【 DISPLAY BOARD 】 (SIDE A)



【 DISPLAY BOARD 】 (SIDE B)



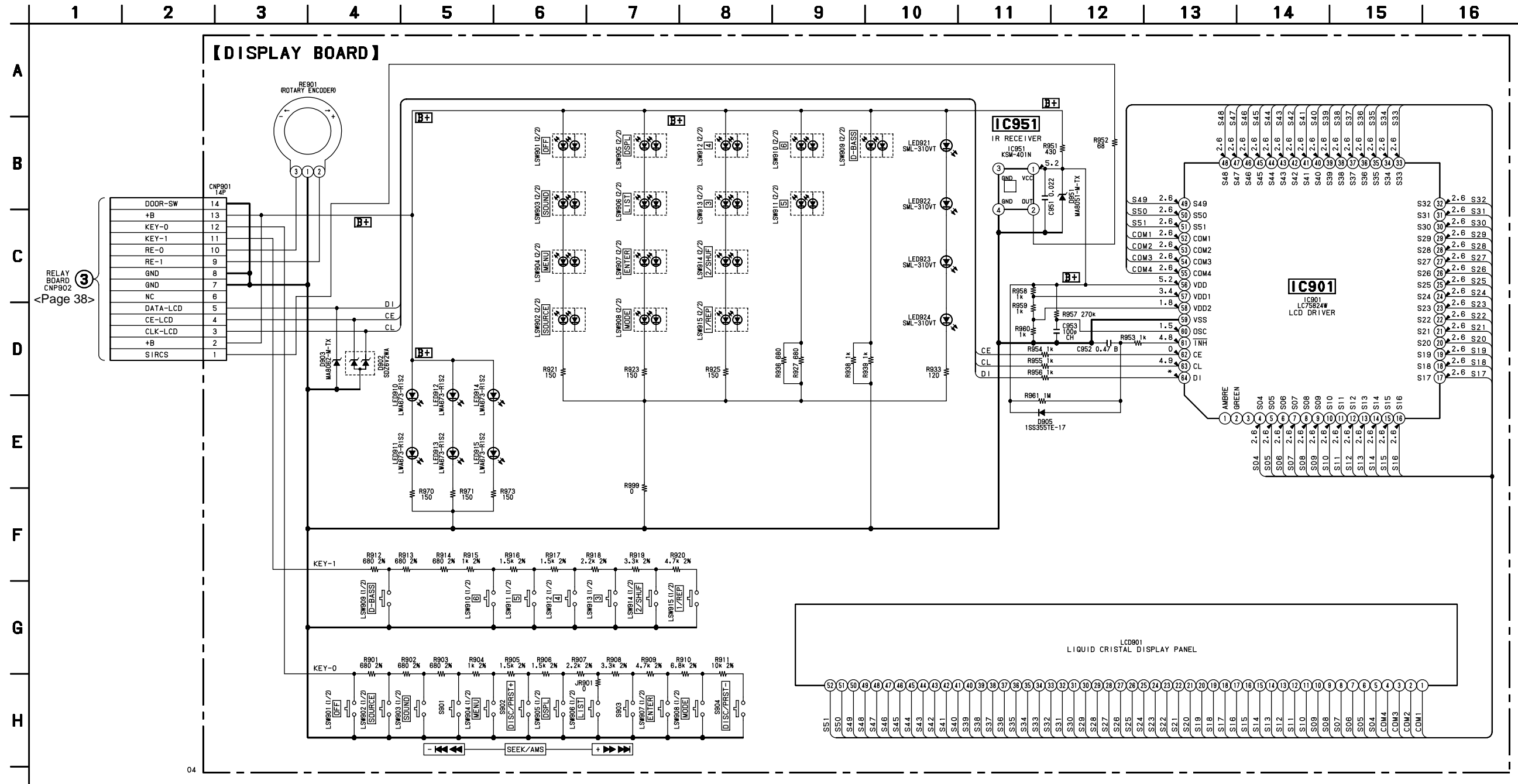
3
RELAY BOARD
CNP902
<Page 37>

• Semiconductor Location

Ref. No.	Location	Ref. No.	Location
(D902)	B-10	LED911	A-13
(D903)	B-10	LED912	A-5
(D905)	A-6	LED913	B-5
(D951)	C-5	LED914	B-13
		LED915	B-5
(IC901)	B-8	LED921	A-2
IC951	C-6	LED922	C-2
		LED923	C-4
LED910	B-13	LED924	A-4

() : SIDE B

• SCHEMATIC DIAGRAM — DISPLAY SECTION —



Note:

- Voltage is dc with respect to ground under no-signal (detuned) condition.
- no mark : FM
- * : Impossible to measure

Ref. No.	Part No.	Description	Remark	Ref. No.	Part No.	Description	Remark
C905	1-124-233-11	ELECT	10uF 20% 16V	D823	8-719-977-12	DIODE KDZ6.8V	
C906	1-163-038-00	CERAMIC CHIP	0.1uF 25V	D824	8-719-988-61	DIODE 1SS355TE-17	
C907	1-124-465-00	ELECT	0.47uF 20% 50V	D901	8-719-200-82	DIODE 11ES2-TA1B	
C908	1-163-038-00	CERAMIC CHIP	0.1uF 25V	D902	8-719-200-82	DIODE 11ES2-TA1B	
C910	1-163-038-00	CERAMIC CHIP	0.1uF 25V	D903	8-719-049-38	DIODE 1N5404TU	
C913	1-126-960-11	ELECT	1uF 20% 50V	D904	8-719-991-33	DIODE 1SS133T-77	
C914	1-128-647-11	DOUBLE LAYERS	0.1F 5.5V	D905	8-719-109-89	DIODE MTZJ-T-77-5.6B	
C915	1-163-021-11	CERAMIC CHIP	0.01uF 10% 50V	D906	8-719-110-14	DIODE MTZJ-T-77-9.1C	
C916	1-163-021-11	CERAMIC CHIP	0.01uF 10% 50V	D907	8-719-200-82	DIODE 11ES2-TA1B	
C917	1-124-233-11	ELECT	10uF 20% 16V	D910	8-719-110-49	DIODE MTZJ-T-77-18A	
C920	1-163-038-00	CERAMIC CHIP	0.1uF 25V	D911	8-719-022-90	DIODE MA8160-M-TX	
C921	1-163-038-00	CERAMIC CHIP	0.1uF 25V	D913	8-719-988-61	DIODE 1SS355TE-17	
C922	1-164-004-11	CERAMIC CHIP	0.1uF 10% 25V	D914	8-719-977-12	DIODE KDZ6.8V	
C999	1-163-009-11	CERAMIC CHIP	0.001uF 10% 50V	D915	8-719-914-44	DIODE DAP202K-T-146	
		< CONNECTOR >		D917	8-719-991-33	DIODE 1SS133T-77	
CN701	1-764-617-12	PIN, CONNECTOR (PC BOARD) 30P		D918	8-719-929-15	DIODE MTZJ-T-77-9.1B	
CNP501	1-774-701-11	PIN, CONNECTOR 16P		D921	8-719-079-42	DIODE 1ZB22(TPA3)	
CNP800	1-770-520-31	CONNECTOR, FFC/FPC 12P		D922	8-719-079-42	DIODE 1ZB22(TPA3)	
CNP801	1-580-907-31	PLUG, CONNECTOR (BUS CONTROL IN)		D923	8-719-079-42	DIODE 1ZB22(TPA3)	
		< JACK >		D924	8-719-079-42	DIODE 1ZB22(TPA3)	
CNJ600	1-793-598-11	JACK (ANTENNA)		D925	8-719-079-42	DIODE 1ZB22(TPA3)	
CNP802	1-764-270-21	JACK (REMOTE IN)		D926	8-719-079-42	DIODE 1ZB22(TPA3)	
		< DIODE >		D927	8-719-079-42	DIODE 1ZB22(TPA3)	
D401	8-719-988-61	DIODE 1SS355TE-17		D928	8-719-079-42	DIODE 1ZB22(TPA3)	
D402	8-719-991-33	DIODE 1SS133T-77		D930	8-719-977-12	DIODE KDZ6.8V	
D404	8-719-422-16	DIODE MA8039-L-TX				< IC >	
D405	8-719-988-61	DIODE 1SS355TE-17		IC101	8-759-663-88	IC TA8268H	
D601	8-719-921-44	DIODE MTZJ-T-77-5.1C		IC701	8-759-653-27	IC TDA7402TR	
D603	8-719-988-61	DIODE 1SS355TE-17		IC801	8-759-688-34	IC MN101C49KTB2	
D701	8-719-110-31	DIODE MTZJ-T-77-12B		IC802	8-759-449-89	IC BA8270F-E2	
D702	8-719-058-24	DIODE RB501V-40TE-17		IC901	8-759-572-12	IC BA4903ST-V5	
D801	8-719-991-33	DIODE 1SS133T-77		IC902	8-759-574-61	IC XC61AN4302MR	
D802	8-719-991-33	DIODE 1SS133T-77				< JUMPER RESISTOR >	
D803	8-719-058-24	DIODE RB501V-40TE-17		JR101	1-216-295-00	SHORT	0
D806	8-719-017-95	DIODE KDZ18V		JR102	1-216-295-00	SHORT	0
D807	8-719-109-97	DIODE MTZJ-T-77-6.8B		JR110	1-216-296-00	SHORT	0
D808	8-719-991-33	DIODE 1SS133T-77		JR111	1-216-296-00	SHORT	0
D809	8-719-017-95	DIODE KDZ18V		JR201	1-216-295-00	SHORT	0
D810	8-719-109-93	DIODE MTZJ-T-77-6.2B		JR202	1-216-295-00	SHORT	0
D811	8-719-109-93	DIODE MTZJ-T-77-6.2B		JR222	1-216-296-00	SHORT	0
D812	8-719-109-93	DIODE MTZJ-T-77-6.2B		JR223	1-216-296-00	SHORT	0
D813	8-719-109-93	DIODE MTZJ-T-77-6.2B		JR401	1-216-296-00	SHORT	0
D814	8-719-109-93	DIODE MTZJ-T-77-6.2B		JR402	1-216-295-00	SHORT	0
D815	8-719-109-93	DIODE MTZJ-T-77-6.2B		JR603	1-216-295-00	SHORT	0
D816	8-719-109-93	DIODE MTZJ-T-77-6.2B		JR701	1-216-296-00	SHORT	0
D817	8-719-109-93	DIODE MTZJ-T-77-6.2B		JR702	1-216-295-00	SHORT	0
D818	8-719-109-93	DIODE MTZJ-T-77-6.2B		JR703	1-216-864-11	METAL CHIP	0 5% 1/16W
D820	8-719-988-61	DIODE 1SS355TE-17		JR705	1-216-295-00	SHORT	0
D821	8-719-988-61	DIODE 1SS355TE-17		JR707	1-216-295-00	SHORT	0
D822	8-719-977-12	DIODE KDZ6.8V		JR709	1-216-295-00	SHORT	0
				JR711	1-216-295-00	SHORT	0

MAIN

Ref. No.	Part No.	Description	Remark	Ref. No.	Part No.	Description	Remark
JR712	1-216-296-00	SHORT	0	Q911	8-729-038-68	TRANSISTOR KRC103S	
JR801	1-216-295-00	SHORT	0	Q912	8-729-049-43	TRANSISTOR STB1132Y	
JR803	1-216-296-00	SHORT	0	Q913	8-729-038-68	TRANSISTOR KRC103S	
JR805	1-216-295-00	SHORT	0	Q914	8-729-038-55	TRANSISTOR KRA103S	
JR807	1-216-296-00	SHORT	0	Q915	8-729-038-55	TRANSISTOR KRA103S	
JR810	1-216-296-00	SHORT	0	Q916	8-729-049-40	TRANSISTOR STC2412G	
JR812	1-216-296-00	SHORT	0	Q919	8-729-038-68	TRANSISTOR KRC103S	
JR813	1-216-295-00	SHORT	0	Q920	8-729-019-00	TRANSISTOR 2SD2394-G	
JR816	1-216-296-00	SHORT	0	Q921	8-729-049-43	TRANSISTOR STB1132Y	
JR817	1-216-296-00	SHORT	0	Q922	8-729-019-00	TRANSISTOR 2SD2394-G	
JR901	1-216-296-00	SHORT	0	< RESISTOR >			
JR902	1-216-296-00	SHORT	0	R101	1-216-064-00	METAL CHIP 4.3K 5%	1/10W
JR911	1-216-296-00	SHORT	0	R102	1-216-089-11	RES-CHIP 47K 5%	1/10W
JR912	1-216-296-00	SHORT	0	R103	1-216-089-11	RES-CHIP 47K 5%	1/10W
JR914	1-216-295-00	SHORT	0	R104	1-216-089-11	RES-CHIP 47K 5%	1/10W
JR916	1-216-296-00	SHORT	0	R112	1-216-025-11	RES-CHIP 100 5%	1/10W
JR917	1-216-296-00	SHORT	0	R114	1-216-174-00	RES-CHIP 100 5%	1/8W
JR920	1-216-296-00	SHORT	0	R115	1-216-077-11	RES-CHIP 15K 5%	1/10W
JR922	1-216-198-11	RES-CHIP 1K	5% 1/8W	R116	1-216-226-00	RES-CHIP 15K 5%	1/8W
JR923	1-216-295-00	SHORT	0	R117	1-216-025-11	RES-CHIP 100 5%	1/10W
JR924	1-216-295-00	SHORT	0	R118	1-216-025-11	RES-CHIP 100 5%	1/10W
< COIL >				R123	1-216-089-11	RES-CHIP 47K 5%	1/10W
L901	1-419-476-31	COIL, CHOKE	250uH	R124	1-216-089-11	RES-CHIP 47K 5%	1/10W
< JACK >				R201	1-216-064-00	METAL CHIP 4.3K 5%	1/10W
PJ400	1-794-068-11	JACK, PIN 6P (AUDIO OUT FRONT/REAR, BUS AUDIO IN)		R202	1-216-089-11	RES-CHIP 47K 5%	1/10W
< TRANSISTOR >				R203	1-216-089-11	RES-CHIP 47K 5%	1/10W
Q101	8-729-920-31	TRANSISTOR DTC343TK-T-146		R204	1-216-089-11	RES-CHIP 47K 5%	1/10W
Q102	8-729-920-31	TRANSISTOR DTC343TK-T-146		R212	1-216-174-00	RES-CHIP 100 5%	1/8W
Q201	8-729-920-31	TRANSISTOR DTC343TK-T-146		R214	1-216-174-00	RES-CHIP 100 5%	1/8W
Q202	8-729-920-31	TRANSISTOR DTC343TK-T-146		R215	1-216-077-11	RES-CHIP 15K 5%	1/10W
Q401	8-729-038-55	TRANSISTOR KRA103S		R216	1-216-077-11	RES-CHIP 15K 5%	1/10W
Q402	8-729-038-68	TRANSISTOR KRC103S		R217	1-216-025-11	RES-CHIP 100 5%	1/10W
Q601	8-729-049-40	TRANSISTOR STC2412G		R218	1-216-025-11	RES-CHIP 100 5%	1/10W
Q602	8-729-049-43	TRANSISTOR STB1132Y		R223	1-216-089-11	RES-CHIP 47K 5%	1/10W
Q603	8-729-038-68	TRANSISTOR KRC103S		R224	1-216-089-11	RES-CHIP 47K 5%	1/10W
Q701	8-729-038-55	TRANSISTOR KRA103S		R402	1-247-891-00	CARBON 330K 5%	1/4W
Q702	8-729-038-68	TRANSISTOR KRC103S		R405	1-216-049-11	RES-CHIP 1K 5%	1/10W
Q703	8-729-015-11	TRANSISTOR 2SD1802FAST-TL		R406	1-216-065-11	RES-CHIP 4.7K 5%	1/10W
Q801	8-729-038-55	TRANSISTOR KRA103S		R408	1-216-049-11	RES-CHIP 1K 5%	1/10W
Q802	8-729-038-55	TRANSISTOR KRA103S		R409	1-216-198-11	RES-CHIP 1K 5%	1/8W
Q803	8-729-049-40	TRANSISTOR STC2412G		R410	1-216-097-11	RES-CHIP 100K 5%	1/10W
Q902	8-729-038-68	TRANSISTOR KRC103S		R411	1-216-121-11	RES-CHIP 1M 5%	1/10W
Q903	8-729-038-55	TRANSISTOR KRA103S		R601	1-216-025-11	RES-CHIP 100 5%	1/10W
Q904	8-729-019-00	TRANSISTOR 2SD2394-G		R602	1-216-025-11	RES-CHIP 100 5%	1/10W
Q905	8-729-049-40	TRANSISTOR STC2412G		R603	1-216-295-00	SHORT 0	
Q906	8-729-038-67	TRANSISTOR KRC102S		R605	1-216-049-11	RES-CHIP 1K 5%	1/10W
Q907	8-729-038-55	TRANSISTOR KRA103S		R606	1-216-058-00	RES-CHIP 2.4K 5%	1/10W
Q908	8-729-038-68	TRANSISTOR KRC103S		R607	1-216-097-11	RES-CHIP 100K 5%	1/10W
				R701	1-216-089-11	RES-CHIP 47K 5%	1/10W
				R703	1-216-206-00	RES-CHIP 2.2K 5%	1/8W
				R704	1-216-295-00	SHORT 0	
				R707	1-216-041-00	METAL CHIP 470 5%	1/10W

Ref. No.	Part No.	Description			Remark	Ref. No.	Part No.	Description			Remark
R710	1-216-089-11	RES-CHIP	47K	5%	1/10W	R904	1-216-065-11	RES-CHIP	4.7K	5%	1/10W
R711	1-216-085-00	METAL CHIP	33K	5%	1/10W	R905	1-216-025-11	RES-CHIP	100	5%	1/10W
R712	1-216-174-00	RES-CHIP	100	5%	1/8W	R907	1-216-049-11	RES-CHIP	1K	5%	1/10W
R713	1-216-174-00	RES-CHIP	100	5%	1/8W	R909	1-216-044-00	METAL CHIP	620	5%	1/10W
R714	1-216-296-00	SHORT	0			R910	1-216-097-11	RES-CHIP	100K	5%	1/10W
R801	1-208-806-11	RES-CHIP	10K	1%	1/10W	R912	1-216-097-11	RES-CHIP	100K	5%	1/10W
R802	1-208-806-11	RES-CHIP	10K	1%	1/10W	R914	1-216-089-11	RES-CHIP	47K	5%	1/10W
R803	1-216-105-11	RES-CHIP	220K	5%	1/10W	R915	1-216-079-00	METAL CHIP	18K	5%	1/10W
R804	1-216-105-11	RES-CHIP	220K	5%	1/10W	R917	1-216-105-11	RES-CHIP	220K	5%	1/10W
R805	1-216-246-00	RES-CHIP	100K	5%	1/8W	R918	1-216-206-00	RES-CHIP	2.2K	5%	1/8W
R806	1-216-097-11	RES-CHIP	100K	5%	1/10W	R920	1-216-097-11	RES-CHIP	100K	5%	1/10W
R807	1-249-417-11	CARBON	1K	5%	1/4W	R925	1-216-059-00	METAL CHIP	2.7K	5%	1/10W
R808	1-249-417-11	CARBON	1K	5%	1/4W	R926	1-216-097-11	RES-CHIP	100K	5%	1/10W
R812	1-216-097-11	RES-CHIP	100K	5%	1/10W	R928	1-216-043-11	RES-CHIP	560	5%	1/10W
R813	1-249-433-11	CARBON	22K	5%	1/4W	R929	1-216-043-11	RES-CHIP	560	5%	1/10W
R814	1-216-081-00	METAL CHIP	22K	5%	1/10W	R930	1-216-097-11	RES-CHIP	100K	5%	1/10W
R815	1-249-417-11	CARBON	1K	5%	1/4W	R931	1-216-073-00	METAL CHIP	10K	5%	1/10W
R816	1-216-025-11	RES-CHIP	100	5%	1/10W	R933	1-216-083-00	METAL CHIP	27K	5%	1/10W
R818	1-216-049-11	RES-CHIP	1K	5%	1/10W	R934	1-247-810-11	CARBON	130	5%	1/4W
R819	1-216-049-11	RES-CHIP	1K	5%	1/10W	R935	1-247-810-11	CARBON	130	5%	1/4W
R820	1-216-049-11	RES-CHIP	1K	5%	1/10W	R936	1-247-810-11	CARBON	130	5%	1/4W
R821	1-216-069-00	METAL CHIP	6.8K	5%	1/10W	R937	1-247-810-11	CARBON	130	5%	1/4W
R822	1-216-081-00	METAL CHIP	22K	5%	1/10W	R938	1-247-810-11	CARBON	130	5%	1/4W
R823	1-216-025-11	RES-CHIP	100	5%	1/10W	R939	1-247-810-11	CARBON	130	5%	1/4W
R824	1-216-097-11	RES-CHIP	100K	5%	1/10W	R940	1-216-138-00	METAL CHIP	3.3	5%	1/8W
R825	1-249-429-11	CARBON	10K	5%	1/4W	R941	1-216-077-11	RES-CHIP	15K	5%	1/10W
R826	1-216-025-11	RES-CHIP	100	5%	1/10W			< SWITCH >			
R827	1-216-025-11	RES-CHIP	100	5%	1/10W						
R828	1-216-073-00	METAL CHIP	10K	5%	1/10W	S900	1-762-638-11	SWITCH, TACTILE (RESET)			
R829	1-247-807-31	CARBON	100	5%	1/4W	S901	1-771-540-11	SWITCH, PUSH (1 KEY) (NOSE DET)			
R830	1-247-807-31	CARBON	100	5%	1/4W	SW802	1-571-478-11	SWITCH, SLIDE (FREQUENCY SELECT) (E)			
R831	1-216-073-00	METAL CHIP	10K	5%	1/10W			< THERMISTOR (POSITIVE) >			
R832	1-216-073-00	METAL CHIP	10K	5%	1/10W	TH801	1-801-792-21	THERMISTOR, POSITIVE			
R833	1-216-049-11	RES-CHIP	1K	5%	1/10W			< TUNER >			
R834	1-216-049-11	RES-CHIP	1K	5%	1/10W						
R837	1-216-049-11	RES-CHIP	1K	5%	1/10W	TU601	A-3220-738-A	TUNER UNIT (TUX-020)			
R838	1-216-049-11	RES-CHIP	1K	5%	1/10W			< VIBRATOR >			
R839	1-216-025-11	RES-CHIP	100	5%	1/10W	X800	1-781-822-21	VIBRATOR, CERAMIC (18.432MHz)			
R840	1-216-025-11	RES-CHIP	100	5%	1/10W	X801	1-567-098-41	VIBRATOR, CRYSTAL (32kHz)			
R841	1-216-049-11	RES-CHIP	1K	5%	1/10W						
R843	1-216-295-00	SHORT	0		(US,CND)						
R844	1-216-025-11	RES-CHIP	100	5%	1/10W						
R845	1-216-097-11	RES-CHIP (E)	100K	5%	1/10W						
R846	1-216-089-11	RES-CHIP (E)	47K	5%	1/10W						
R852	1-216-295-00	SHORT	0								
R854	1-216-295-00	SHORT	0								
R855	1-216-304-11	METAL CHIP	3.3	5%	1/10W						
R888	1-216-089-11	RES-CHIP	47K	5%	1/10W						
R901	1-216-246-00	RES-CHIP	100K	5%	1/8W						
R902	1-216-049-11	RES-CHIP	1K	5%	1/10W						
R903	1-216-027-00	METAL CHIP	120	5%	1/10W						

