

# MDS-JA3ES

## SONY SERVICE MANUAL

US Model  
Canadian Model  
AEP Model

## SUPPLEMENT-2

File this supplement with the service manual.

- Subject :**
1. CORRECTION
  2. CHANGE OF OVER WRITE HEAD
  3. CHANGE OF MECHANISM DECK
  4. BOARD CHANGED
  5. PARTS CHANGED

(ECN-CD501853)

### 1. CORRECTION

As there are some mistakes in the previous service manual supplement-1, please correct the followings.

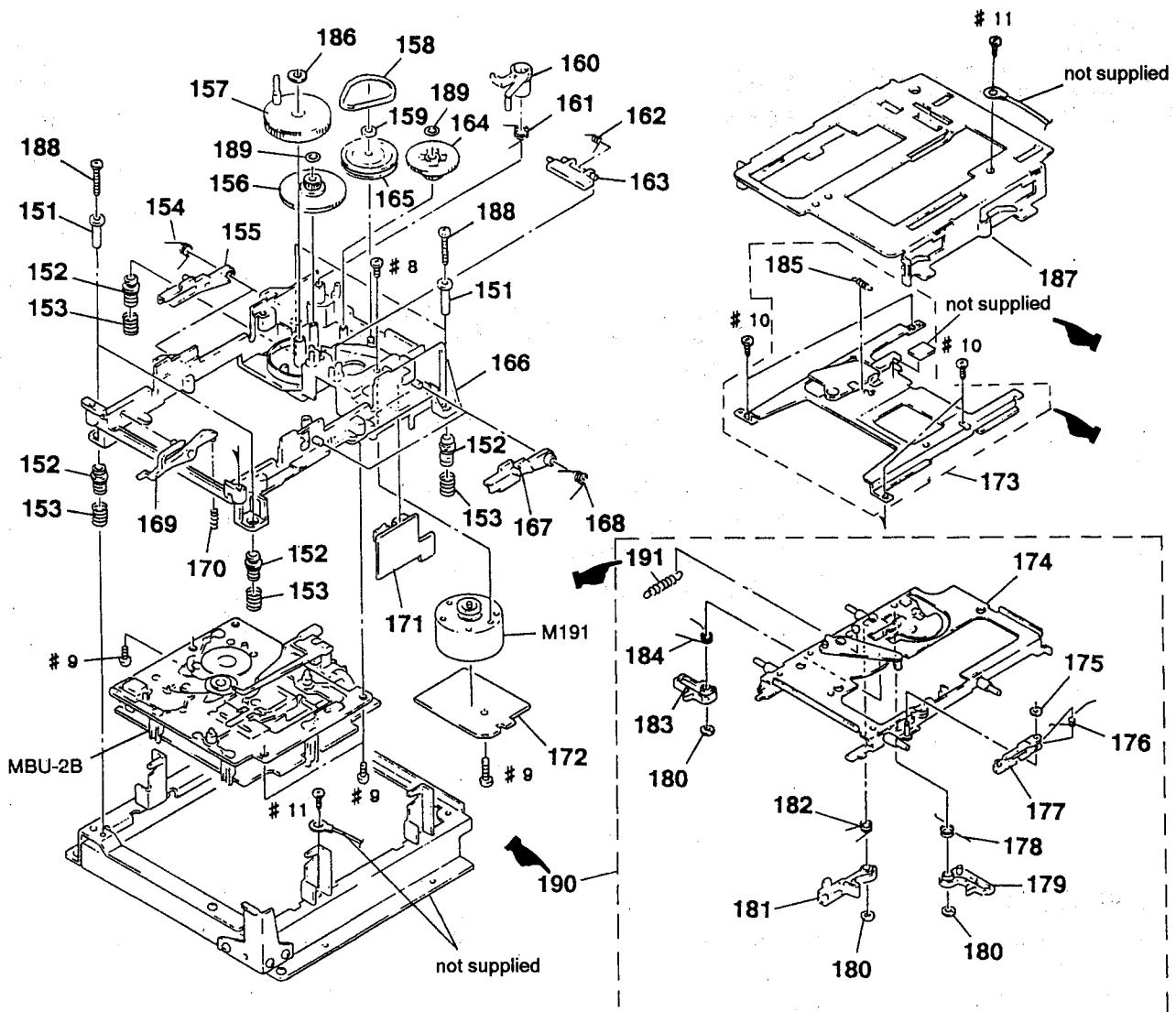
■ : Corrected portion

page	INCORRECT	CORRECT
14	<p><b>[DIGITAL BOARD]</b> Location : M-N, 26-27</p> <p>IC221 CX82536AR ATRAC</p>	<p>IC221 CX82536AR ATRAC</p>

- Correct your service manual as shown below.
- : Indicated corrected portion

(Page 87)

6-4. MECHANISM SECTION (MDM-2C)



Ref.No.	Part No.	Description	Remark	Ref.No.	Part No.	Description	Remark
151	4-983-100-01	COLLAR (DAMPER)	■	* 172	1-653-412-11	MOTOR BOARD	
152	4-967-671-01	INSULATOR (MD)		173	A-4660-647-B	BRACKET (LVO) ASSY	
153	4-967-673-01	SPRING, COMPRESSION	■	* 174	X-4946-378-1	HOLDER ASSY	
154	4-967-668-01	SPRING (UDL), TORSION		175	4-968-919-11	WASHER, STOPPER	
155	4-967-667-01	LEVER (UDL)		176	4-967-646-01	SPRING (SHT), TORSION	
156	4-967-655-01	GEAR (BD-B)		177	4-967-645-01	LEVER (SHT)	
157	X-4945-069-1	CAM ASSY		178	4-977-450-01	SPRING (LM), TORSION	
158	4-967-656-01	BELT (BD)		179	4-967-639-01	LEVER (LM)	
159	4-968-919-31	WASHER, STOPPER		180	4-968-919-01	WASHER, STOPPER	
160	4-967-637-01	LEVER (SLM)		181	4-967-641-01	LEVER (L)	
161	4-967-638-01	SPRING (SLM), TORSION		182	4-967-642-01	SPRING (L), TORSION	
162	4-968-273-01	SPRING (OWH), TORSION		183	4-967-643-01	LEVER (LS)	
163	4-968-272-01	LEVER (OWH)		184	4-967-644-01	SPRING (LS), TORSION	
164	4-967-654-01	GEAR (BD-A)	■	185	4-967-664-01	SPRING, TENSION	
165	4-957-794-01	PULLEY (GEAR 1)		186	4-968-919-21	WASHER, STOPPER	
* 166	X-4945-068-1	BASE (BD) ASSY		* 187	X-4946-349-1	SLIDER (M) ASSY	
167	4-967-669-01	LEVER (UDR)		188	4-972-910-01	SCREW (2.6X18), +B	
168	4-967-670-01	SPRING (UDR), TORSION		189	4-968-919-41	WASHER, STOPPER	
169	4-967-657-01	LEVER (DOOR)	■	190	A-4660-953-B	HOLDER, COMPLETE ASSY	
170	4-970-710-01	SPRING, COMPRESSION		191	4-971-743-02	SPRING, TENSION	
* 171	1-653-411-11	DETECTION SW BOARD	■	M191	A-4660-646-A	MOTOR ASSY (LOADING)	

## 2. CHANGE OF OVER WRITE HEAD

The over write head has changed.

According to the change, the service form will be changed, so refer to "How to discriminate (Over write head)"

### How to discriminate (Over write head)

FORMER TYPE				NEW TYPE			
Ref.No.	Part No.	Description	Remark	Ref.No.	Part No.	Description	Remark
203	1-654-446-11	FLEXIBLE BOARD (OWH)				not used	
HR901	1-500-175-11	HEAD, OVER WRITE (RF322-74A)		HR901	1-500-304-21	HEAD, OVER WRITE	

\* The new part can be used instead of the former over write head.

### Difference table

Page	FORMER	NEW
39	<p>Location: A, 4-6</p>	<p>Location: A, 4-6</p>
41	<p>Location: B-C, 2-4</p> <p><b>OPTICAL PICK-UP BLOCK (KMS-210A/J-N)</b></p>	<p>Location: B-C, 2-4</p> <p><b>OPTICAL PICK-UP BLOCK (KMS-210A/J-N)</b></p>

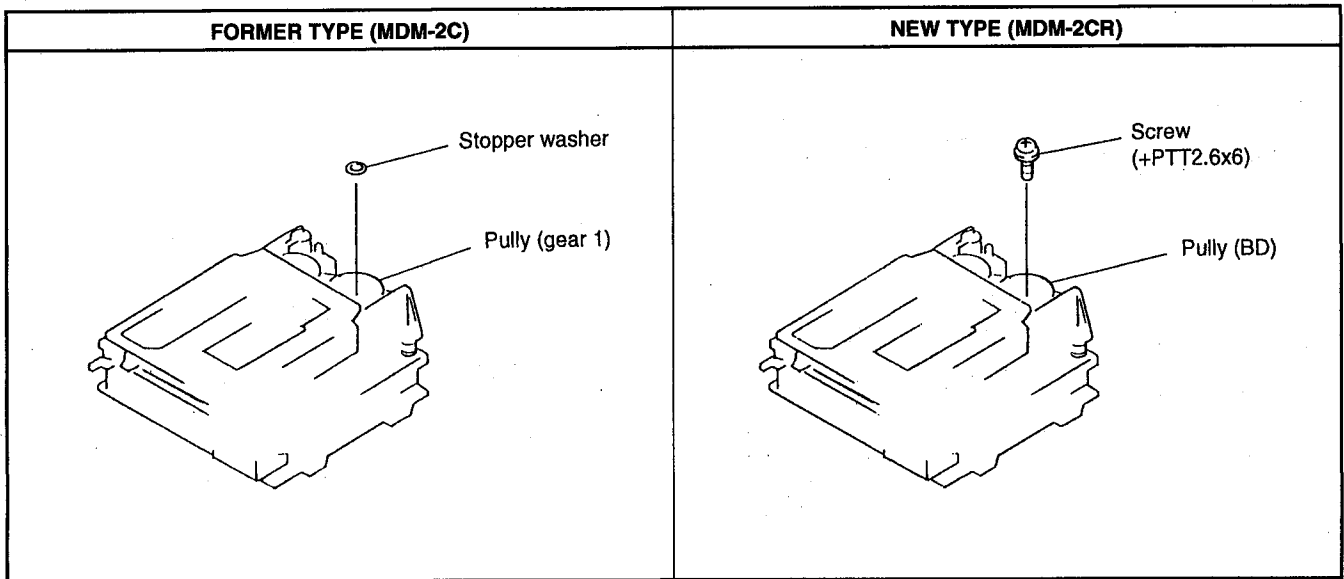
Page	FORMER				NEW			
	Ref.No.	Part No.	Description	Remark	Ref.No.	Part No.	Description	Remark
88	*** EXPLODED VIEWS ***				*** EXPLODED VIEWS ***			
	203	1-654-446-11	FLEXIBLE BOARD (OWH)				not used	
	HR901	1-500-175-11	HEAD, OVER WRITE (RF322-74A)		HR901	1-500-304-21	HEAD, OVER WRITE	
100	*** MISCELLANEOUS ***				*** MISCELLANEOUS ***			
	203	1-654-446-11	FLEXIBLE BOARD (OWH)				not used	
	HR901	1-500-175-11	HEAD, OVER WRITE (RF322-74A)		HR901	1-500-304-21	HEAD, OVER WRITE	

### 3. CHANGE OF MECHANISM DECK

The mechanism deck has been changed from MDM-2C to MDM-2CR.

Refer to "How to discriminate (Mechanism deck)" so that there is no interchangeability between MDM-2C to MDM-2CR.

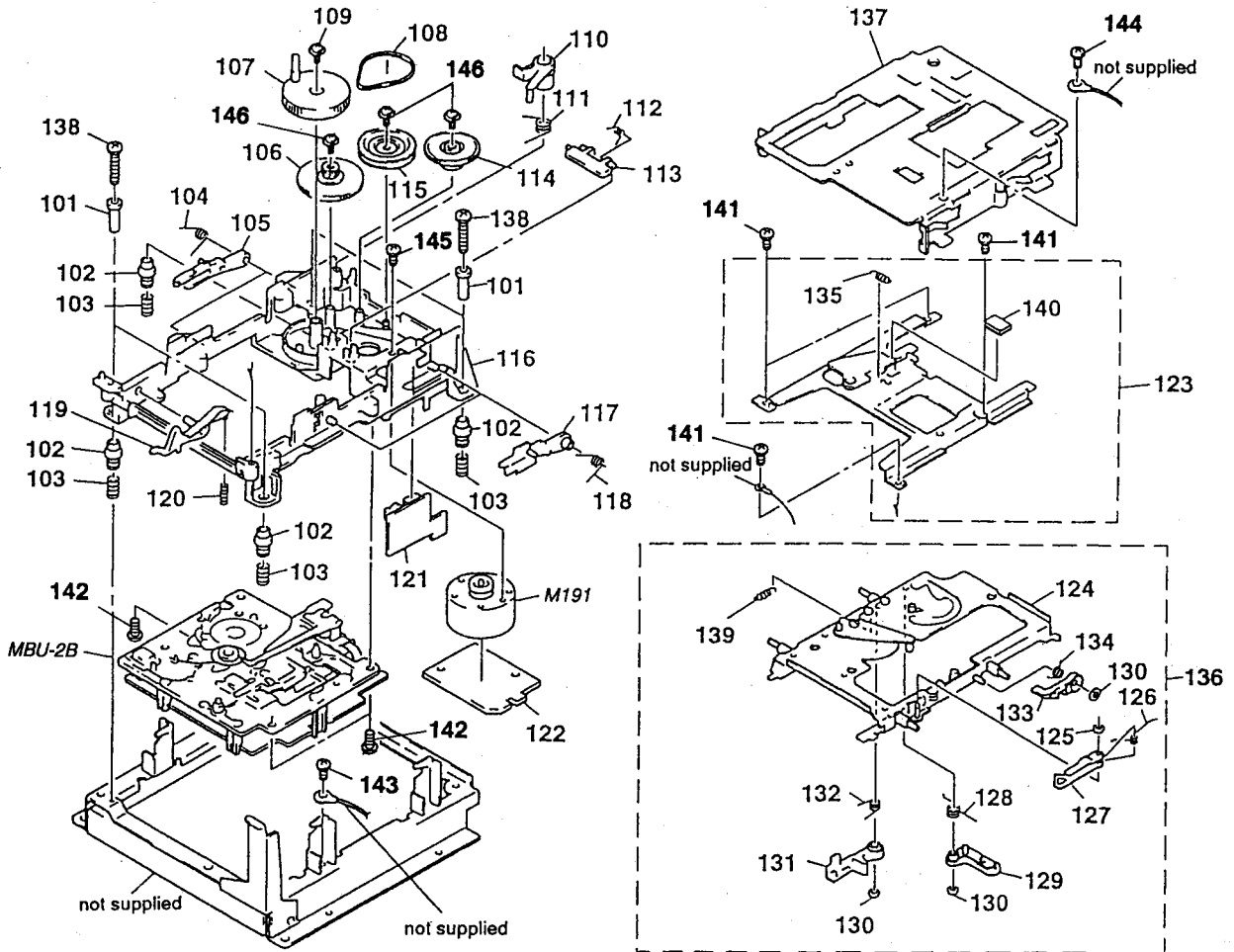
#### How to discriminate (Mechanism deck)



**NOTE:**

- Items marked “ \* ” are not stocked since they are seldom required for routine service. Some delay should be anticipated when ordering these items.
- The mechanical parts with no reference number in the exploded views are not supplied.

**MECHANISM SECTION (MDM-2CR)**



Ref. No.	Part No.	Description	Remark	Ref. No.	Part No.	Description	Remark
101	4-983-100-01	COLLAR (DAMPER)		125	4-968-919-11	WASHER, STOPPER	
102	4-967-671-01	INSULATOR (MD)		126	4-967-646-01	SPRING (SHT), TORSION	
103	4-967-673-01	SPRING, COMPRESSION		127	4-967-645-01	LEVER (SHT)	
104	4-967-668-01	SPRING (UDL), TORSION		128	4-983-106-02	SPRING (LM), TORSION	
105	4-967-667-01	LEVER (UDL)		129	4-967-639-01	LEVER (LM)	
106	4-977-610-01	GEAR (BD-B)		130	4-968-919-01	WASHER, STOPPER	
107	X-4945-069-1	CAM ASSY		131	4-967-641-01	LEVER (L)	
108	4-967-656-01	BELT (BD)		132	4-967-642-01	SPRING (L), TORSION	
109	4-933-134-01	SCREW (+PTPWH M2. 6X6)		133	4-982-040-01	LEVER (LOCK)	
110	4-967-637-01	LEVER (SLM)		134	4-982-099-01	SPRING (LOCK), TORSION	
111	4-984-426-01	SPRING (SLM), TORSION		135	4-967-664-05	SPRING, TENSION	
112	4-968-273-01	SPRING (OWH), TORSION		136	A-4672-071-B	HOLDER COMPLETE ASSY	
113	4-968-272-01	LEVER (OWH)		* 137	X-4946-349-1	SLIDER (M) ASSY	
114	4-977-609-01	GEAR (BD-A)		138	4-972-910-01	SCREW (2. 6X18), +B	
115	4-977-608-01	PULLEY (BD)		139	4-971-743-02	SPRING, TENSION	
116	4-977-777-01	BASE (BD)		140	4-983-110-01	CUSHION (LVO)	
117	4-967-669-01	LEVER (UDR)		141	7-685-104-19	SCREW +P 2X6 TYPE2 NON-SLIT	
118	4-967-670-01	SPRING (UDR), TORSION		142	7-685-645-79	SCREW +BVTP 3X6 TYPE2 N-S	
119	4-979-400-01	LEVER (DOOR)		143	7-621-773-86	SCREW +BVTT 2. 6X4 (S)	
120	4-970-710-01	SPRING, COMPRESSION		144	7-621-255-25	SCREW +PTT 2X4 (S)	
* 121	1-653-411-11	DETECTION SW BOARD		145	7-621-775-20	SCREW +B 2. 6X5	
* 122	1-653-412-11	MOTOR BOARD		146	7-621-770-67	SCREW +PTT 2. 6X6 (S)	
123	A-4672-087-A	BRACKET (LVO) ASSY		M191	A-4660-646-A	MOTOR (LOADING) ASSY (MD)	
124	X-4947-136-2	HOLDER ASSY					

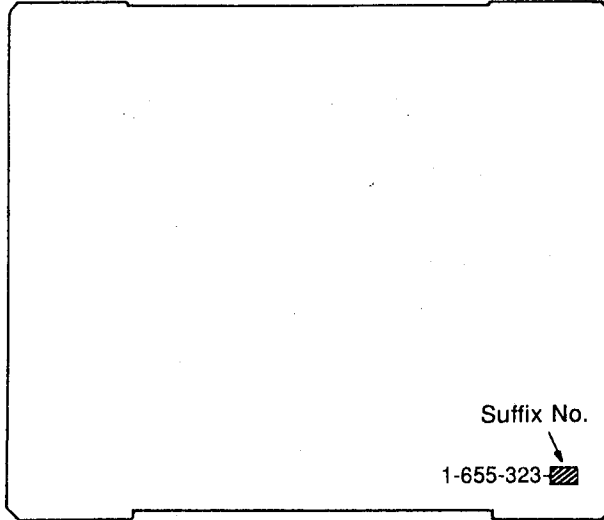
**NOTE:** As for the former typed mechanism deck (MDM-2C), refer to 1. CORRECTION on page 2 in this manual.

## 4. BOARD CHANGED



### DIGITAL board change

**Note :** There is no interchangeability in some mounting parts of boards which have a suffix No. -**14** or later and a suffix No. -**13** or before. The differences are shown as below.

• Part No. Location —DIGITAL board —(SIDE A)



### Parts change with the change of a digital board.

Ref No.	FORMER Suffix No. - <b>13</b> or before			NEW Suffix No. - <b>14</b> or later		
	Part No.	Description	Remark	Part No.	Description	Remark
C250	1-163-038-00	CERAMIC CHIP 0.1uF 25V				
C251	1-163-038-00	CERAMIC CHIP 0.1uF 25V				
C851	1-163-227-11	CERAMIC CHIP 10PF 0.5PF 50V		1-163-087-00	CERAMIC CHIP 47PF 0.25PF 50V	
C852	1-163-227-11	CERAMIC CHIP 10PF 0.5PF 50V		1-163-087-00	CERAMIC CHIP 47PF 0.25PF 50V	
IC205	8-759-344-74	IC CXD8504M		8-759-344-63	IC CXD8504M-T6	
R851	1-216-066-00	METAL CHIP 5.1K 5% 1/10W		1-216-063-00	METAL CHIP 3.9K 5% 1/10W	
R852				1-216-033-00	METALGLAZE 220 5% 1/10W	
X851	1-579-069-11	VIBRATOR, CRYSTAL (49.152MHz)		1-579-971-11	VIBRATOR, CRYSTAL (49.152MHz)	
						
		External appearance of X851			External appearance of X851	

**Note :** The using parts will be changed as shown in the table above according to using X851. Perform the replacement referring to the external appearance of X851.

**Changed portion**


**Note :** The suffix No. of DIGITAL board has changed to -14, only differences compared with suffix No. -13 are mentioned in the following table.

As for the contents not mentioned here. refer to this table together with the service manual supplement-1 (9-960-228-82)

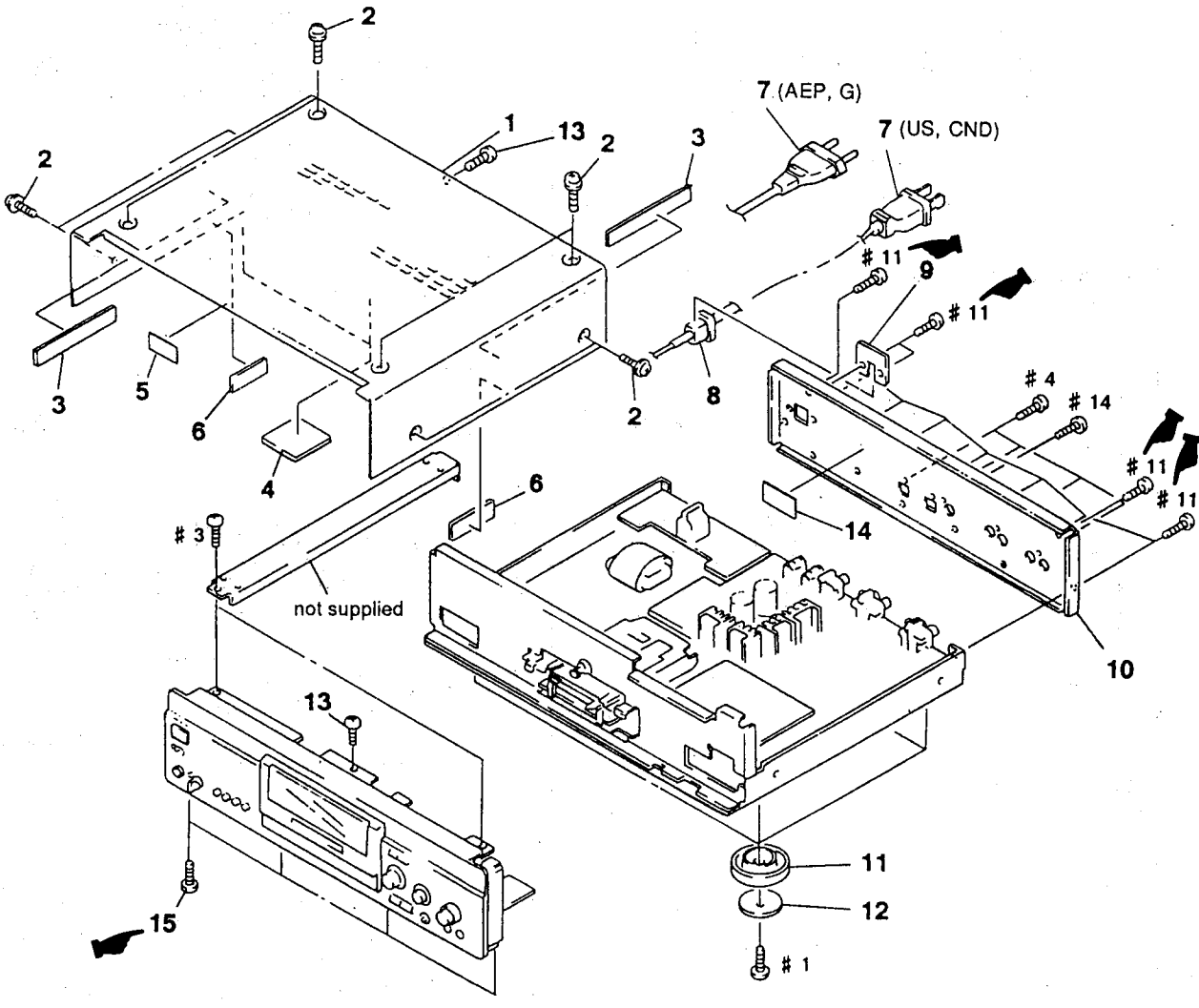
Page	FORMER Suffix No. -13 or before	NEW Suffix No. -14 or later
14	<p><b>[DIGITAL BOARD]</b> Location : M-N, 26-27</p>	
15	<p><b>[DIGITAL BOARD] (SIDE A)</b> Location : E-F, 4-5</p> <p style="text-align: right;">1-655-323-<span style="border: 1px solid black; padding: 2px;">13</span></p>	<p style="text-align: right;">1-655-323-<span style="border: 1px solid black; padding: 2px;">14</span></p>
18	<p><b>[DIGITAL BOARD] (SIDE B)</b> Location : E-F, 17-18</p> <p style="text-align: right;">1-655-323-<span style="border: 1px solid black; padding: 2px;">13</span></p>	<p style="text-align: right;">1-655-323-<span style="border: 1px solid black; padding: 2px;">14</span></p>

# 5. PARTS CHANGED

## PARTS CHANGED

 : Indicated changed portion

Page	FORMER				NEW			
84	Ref.No.	Part No.	Description	Remark	Ref.No.	Part No.	Description	Remark
	*** EXPLODED VIEWS ***				*** EXPLODED VIEWS ***			
					15	3-704-515-21	SCREW (BV/RING)	





**PARTS CHANGED**

Page	FORMER				NEW			
85	Ref.No.	Part No.	Description	Remark	Ref.No.	Part No.	Description	Remark
	53	4-971-755-01	KNOB (AMS)(BLACK)		53	4-971-755-02	KNOB (AMS)(BLACK)	
	68	4-969-236-01	SPRING (LID), TORSION		68	4-976-593-01	SPRING (LID), TORSION	
					89	4-955-901-01	CUSHION (FL)	
					90	4-617-601-01	SCREW +B 2.6 x 4	

# 15

# 4

**How to discriminate (TORSION SPRING (LID))**

Ref.No.	FORMER TYPE	NEW TYPE
68		

PARTS CHANGED

Page	FORMER				NEW			
86								
100	<u>Ref.No.</u>	<u>Part No.</u>	<u>Description</u>	<u>Remark</u>	<u>Ref.No.</u>	<u>Part No.</u>	<u>Description</u>	<u>Remark</u>
	*** HARDWARE LIST ***				*** HARDWARE LIST ***			
	#7	7-621-770-87	SCREW					