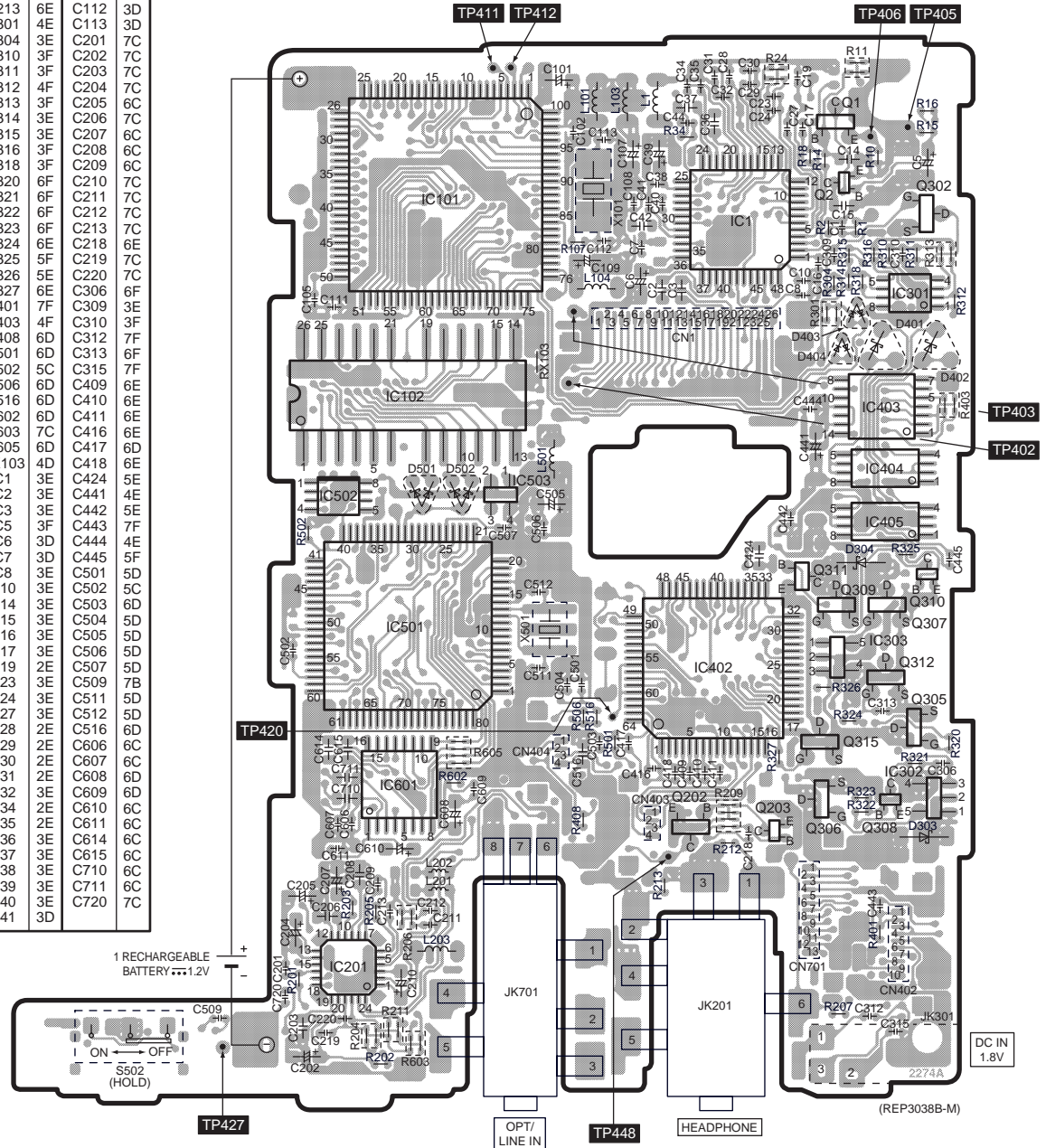


Note: This printed circuit board diagram may be modified at any time with the development of new technology.

■ ELECTRICAL PARTS LOCATION

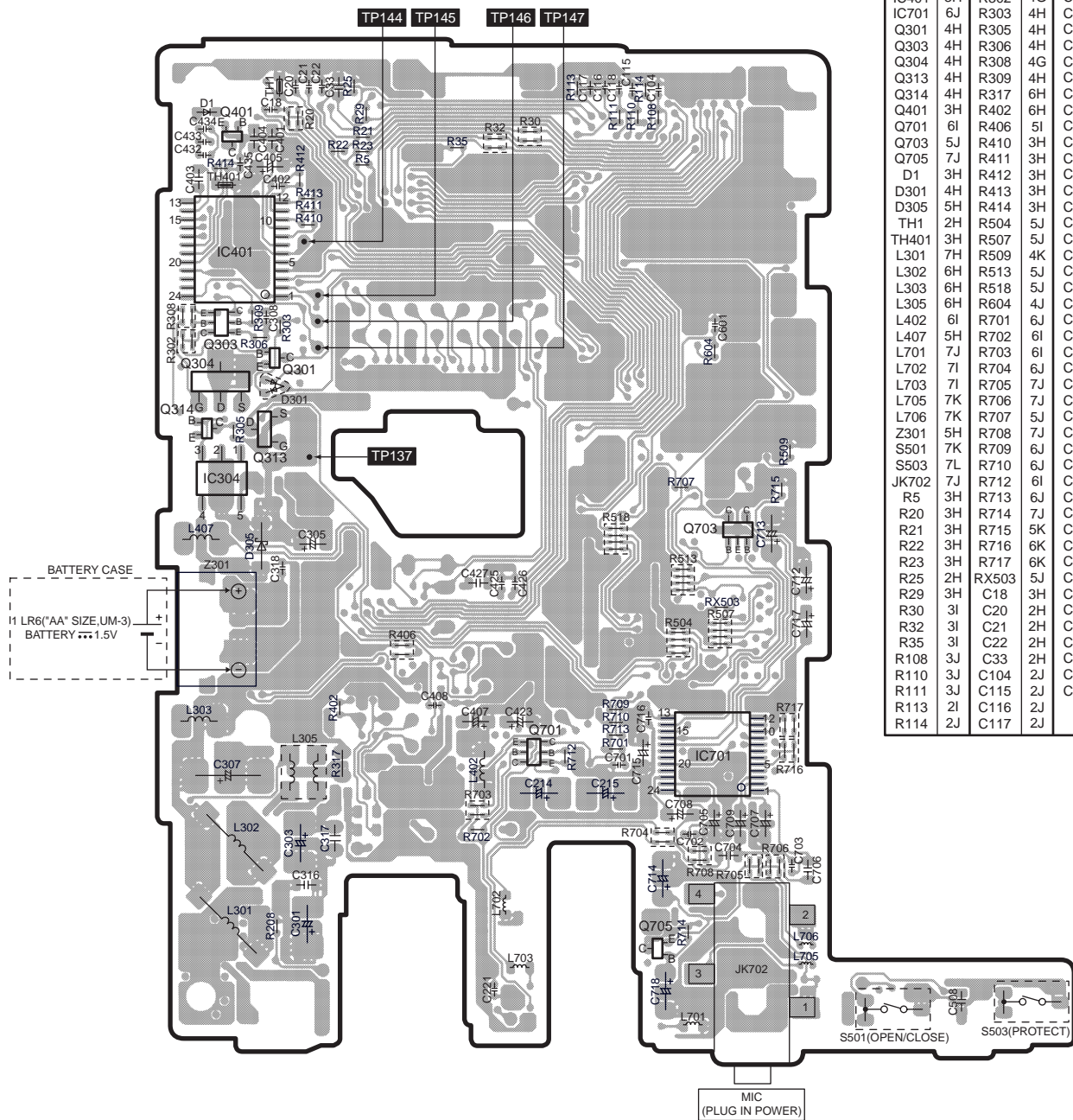
Ref. No.	Lo. No.	Ref. No.	Lo. No.	Ref. No.	Lo. No.
▲ MAIN P.C.B."SIDE:A"					
IC1	3E	R202	7C	C42	3D
IC101	3C	R203	7C	C44	3E
IC102	4C	R204	7C	C101	2D
IC201	7C	R205	7C	C102	3D
IC301	3F	R206	7C	C105	4C
IC302	6F	R207	7E	C107	3D
IC303	5E	R209	6E	C108	3D
IC402	5E	R211	7C	C109	3D
IC403	4F	R212	6E	C111	4C
IC404	4F	R213	6E	C112	3D
IC405	5F	R301	4E	C113	3D
IC501	5C	R304	3E	C201	7C
IC502	5C	R310	3F	C202	7C
IC503	4D	R311	3F	C203	7C
IC601	6C	R312	4F	C204	7C
Q1	3E	R313	3F	C205	6C
Q2	3E	R314	3E	C206	7C
Q202	6E	R315	3E	C207	6C
Q203	6E	R316	3F	C208	6C
Q302	3F	R318	3F	C209	6C
Q305	6F	R320	6F	C210	7C
Q306	6E	R321	6F	C211	7C
Q307	5F	R322	6F	C212	7C
Q308	6F	R323	6F	C213	7C
Q309	5E	R324	6E	C218	6E
Q310	5F	R325	5F	C219	7C
Q311	5E	R326	5E	C220	7C
Q312	5F	R327	6E	C306	6E
Q315	6E	R401	7F	C309	3F
D303	6F	R403	4F	C310	3F
D304	5F	R408	6D	C312	7F
D401	4F	R501	6D	C313	6F
D402	4F	R502	5C	C315	7F
D403	4F	R506	6D	C409	6E
D404	4E	R516	6D	C410	6E
D501	4C	R602	6D	C411	6E
D502	4D	R603	7C	C416	6E
L1	3E	R605	6D	C417	6D
L101	3D	RX103	4D	C418	6E
L103	3D	C1	3E	C424	5E
L104	3D	C2	3E	C441	4E
L201	6C	C3	3E	C442	5E
L202	6C	C5	3F	C443	7F
L203	7C	C6	3D	C444	4E
L501	4D	C7	3D	C445	5F
X101	3D	C8	3E	C501	5D
X501	5D	C10	3E	C502	5C
S502	7B	C14	3E	C503	6D
CN1	4E	C15	3E	C504	5D
CN402	7F	C16	3E	C505	5D
CN403	6E	C17	3E	C506	5D
CN404	6D	C19	2E	C507	5D
CN701	7E	C23	3E	C509	7B
JK201	7E	C24	3E	C511	5D
JK301	7F	C27	3E	C512	5D
JK701	7D	C28	2E	C516	6D
R1	3F	C29	2E	C606	6C
R2	3E	C30	2E	C607	6C
R10	3F	C31	2E	C608	6D
R11	2F	C32	3E	C609	6D
R14	3E	C34	2E	C610	6C
R15	3F	C35	2E	C611	6C
R16	3F	C36	3E	C614	6C
R18	3E	C37	3E	C615	6C
R24	2E	C38	3E	C710	6C
R34	3E	C39	3E	C711	6C
R107	3D	C40	3E	C720	7C
R201	7C	C41	3D		

A MAIN P.C.B."SIDE:A"



1
2
3
4
5
6
7
8

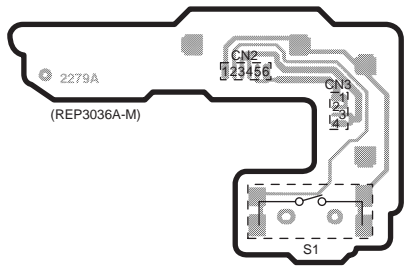
A MAIN P.C.B."SIDE:B"



ELECTRICAL PARTS LOCATION

Ref. No.	Lo. No.	Ref. No.	Lo. No.	Ref. No.	Lo. No.
A MAIN P.C.B."SIDE"B					
IC304	5H	R208	7H	C118	2J
IC401	3H	R302	4G	C214	6I
IC701	6J	R303	4H	C215	6J
Q301	4H	R305	4H	C221	7I
Q303	4H	R306	4H	C301	7H
Q304	4H	R308	4G	C303	6H
Q313	4H	R309	4H	C305	5H
Q314	4H	R317	6H	C307	6H
Q401	3H	R402	6H	C308	4H
Q701	6I	R406	5I	C316	7H
Q703	5J	R410	3H	C317	6H
Q705	7J	R411	3H	C318	5H
D1	3H	R412	3H	C401	3H
D301	4H	R413	3H	C402	3H
D305	5H	R414	3H	C403	3G
TH1	2H	R504	5J	C404	3H
TH401	3H	R507	5J	C405	3H
L301	7H	R509	4G	C407	6I
L302	6H	R513	5J	C408	6I
L303	6H	R518	5J	C423	6I
L305	6H	R604	4J	C425	5I
L402	6I	R701	6J	C426	5I
L407	5H	R702	6I	C427	5I
L701	7J	R703	6I	C432	3G
L702	7I	R704	6J	C433	3G
L703	7I	R705	7J	C434	3H
L705	7K	R706	7J	C435	3H
L706	7K	R707	5J	C508	7K
Z301	5H	R708	7J	C601	4J
S501	7K	R709	6J	C701	6J
S503	7L	R710	6J	C702	6J
JK702	7J	R712	6I	C703	7K
R5	3H	R713	6J	C704	6J
R20	3H	R714	7J	C705	6J
R21	3H	R715	5K	C706	7K
R22	3H	R716	6K	C707	6J
R23	3H	R717	6K	C708	6J
R25	2H	RX503	5J	C709	6J
R29	3H	C18	3H	C712	5K
R30	3I	C20	2H	C713	5J
R32	3I	C21	2H	C714	7J
R35	3I	C22	2H	C715	6J
R108	3J	C33	2H	C716	6J
R110	3J	C104	2J	C717	5K
R111	3J	C115	2J	C718	7J
R113	2I	C116	2J		
R114	2J	C117	2J		

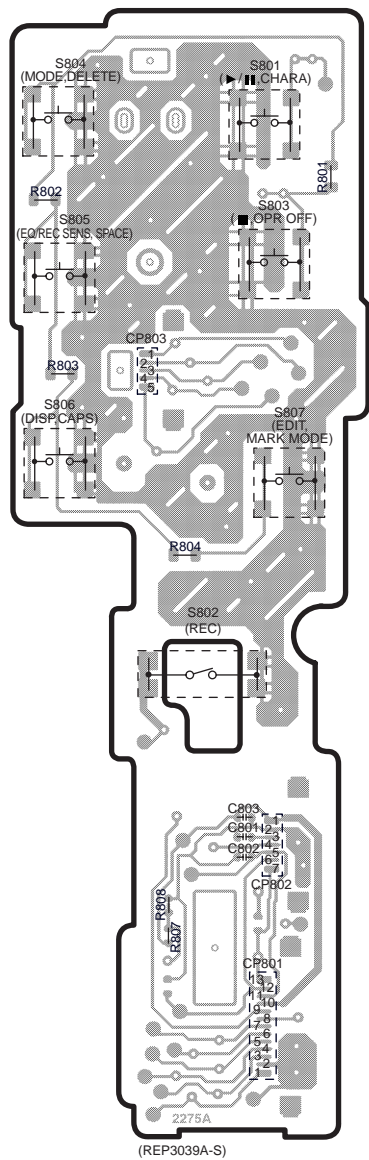
B RECORDING HEAD P.C.B.



ELECTRICAL PARTS LOCATION

Ref. No.	Lo. No.	Ref. No.	Lo. No.
B RECORDING HEAD P.C.B.			
S1	2B	CN3	2C
CN2	1B		
C OPERATION P.C.B. "SIDE:A"			
S801	4B	R801	4B
S802	6B	R802	4A
S803	4B	R803	5A
S804	4A	R804	6B
S805	4A	R807	7B
S806	5A	R808	7B
S807	5B	C801	7B
CP801	8B	C802	7B
CP802	7B	C803	7B
CP803	5B		

C OPERATION P.C.B. "SIDE:A"



C OPERATION P.C.B. "SIDE:B"

