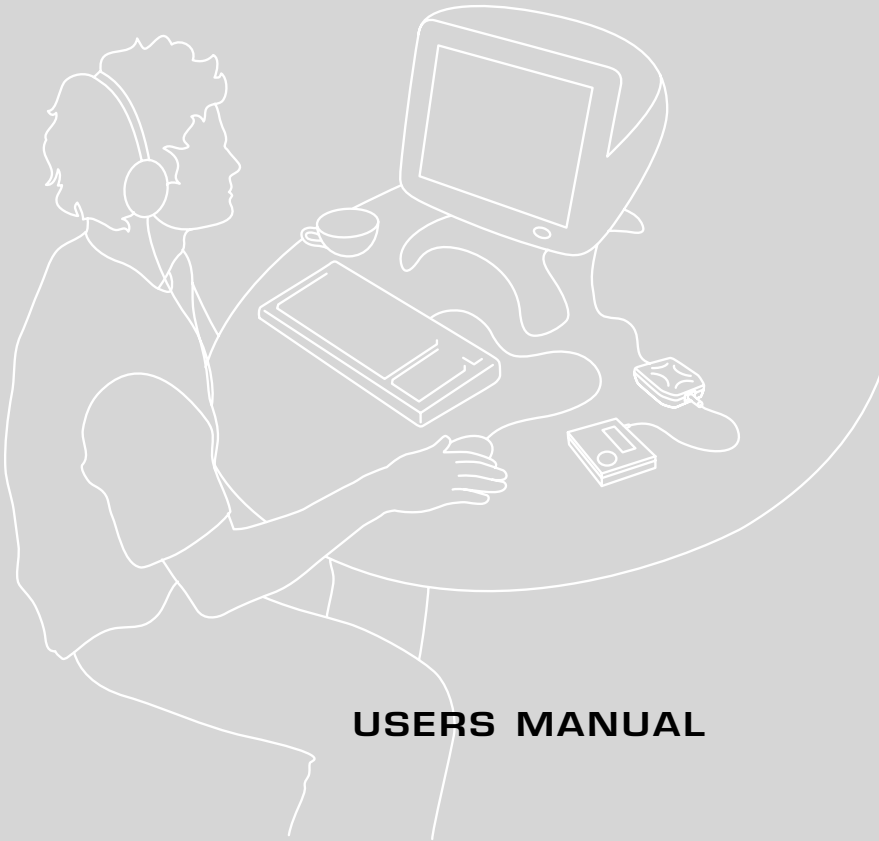


xitel

# MD-PORT™ DG2

PC TO MINIDISC DIGITAL RECORDING KIT



**USERS MANUAL**

## **MD-PORT™ DG2**

### **PC USERS MANUAL**

- **WINDOWS 98**
- **WINDOWS 2000**
- **WINDOWS ME**

**(Mac users: please turn to page 15)**

## Getting started

Getting your DG2 going is as simple as plugging it into a primary USB port of any computer running Windows 98, Windows ME, or Windows 2000. There's no need to load any special software, but you will have to follow a few simple steps to enable the Windows USB audio drivers. After you've finished these steps, make sure to read our tips on recording before launching into a full session.

## Windows 98 installation

**Note: Some computer systems ship with an OEM version of Windows 98 that does not contain the entire generic USB driver and audio platform. If you experience any trouble loading the USB drivers, please refer to the troubleshooting section at the end of this user manual for further instructions.**

1. There's no need to turn your computer off when plugging the DG2 in for the first time. Locate your computer's USB port and plug the supplied USB cable in. Now plug the DG2 into the other end of the USB cable.
2. Windows 98 will open an *Add New Hardware Wizard* and let you know it's found the DG2. It will then start loading drivers for a USB Composite Device, USB Human Interface Device, or USB Audio Device, depending on what components have previously been installed on your system. Click **Next**.
3. Check the option **Search for the best driver for your device (Recommended)** and click **Next**.
4. Windows 98 should already have the various USB components installed and will automatically default to the location of those drivers on your hard drive. Click **Next**. If Windows 98 does not have the various USB components loaded, it will tell you that the files could not be found and will request the Windows 98 CD. In this case, put your Windows 98 CD into the CD-ROM drive and place a check next to CD-ROM drive, then click **Next**.
5. The Wizard will now let you know it has located drivers for a USB Composite Device, USB Human Interface Device, or USB Audio Device and will identify these drivers under the heading *Location of Driver*. This location may be your hard drive, or CD-ROM drive, depending on what drivers your system has had installed in the past. Click **Next**.
6. The first set of drivers will now install.
7. Once the first set of drivers finishes installing, Windows 98 may require the other two USB drivers to also be installed. This will depend on what USB audio devices have previously been used on your system. Simply follow the procedure outlined above until all the required USB drivers have been loaded.
8. Once all of the required drivers have been installed, Windows 98 will start.
9. We recommend rebooting your computer to ensure all changes take effect. Your driver installation for the DG2 is now complete.

## Windows Millennium Edition installation

1. There's no need to turn your computer off when plugging the DG2 in for the first time. Locate your computer's USB port and plug the supplied USB cable in. Now plug the DG2 into the other end of the USB cable.
2. Windows ME will open a *New Hardware Found* window and let you know it's found the DG2. It will then start loading drivers for a USB Composite Device, USB Human Interface Device, or USB Audio Device, depending on what components have previously been installed on your system. Click **Next**.
3. In the *Add New Hardware Wizard*, place a check next to the option **Automatic Search for a Better Driver (Recommended)** and click **Next**.
4. The *Add New Hardware Wizard* will load a Windows Driver folder. When it has completed loading the drivers from this folder, the *Add New Hardware Wizard* will let you know it has finished installing the new hardware device. Click on **Finish**.
5. Once the first set of drivers has finished installing, Windows ME may require the other two USB drivers to also be installed. This will depend on what USB audio devices have previously been used on your system. Simply follow the procedure outlined above until all the required USB drivers have been installed.
6. Once all of the required drivers have been installed, Windows ME will start.
7. We recommend rebooting your computer to ensure all changes take effect. Your driver installation for the DG2 is now complete.

## Windows 2000 installation

1. With USB technology, there's no need to turn your computer off when plugging the DG2 in for the first time. Locate your computer's USB port and plug the supplied USB cable in. Now plug the DG2 into the other end of the USB cable.
2. Windows 2000 will automatically detect the addition of a new USB interface. It will automatically update your USB drivers, including USB Composite Device, USB Human Interface Device, and USB Audio Device.
3. Once Windows 2000 has completed updating the USB drivers, it will automatically set the DG2 as your preferred multimedia device.
4. We recommend rebooting your computer to ensure all changes take effect. Your driver installation for the DG2 is now complete.

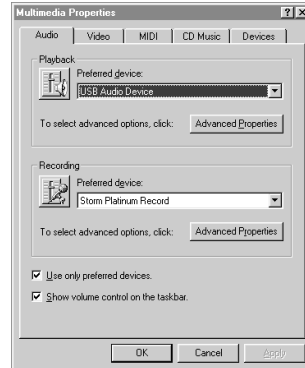
## Checking that the DG2 is selected as preferred device in Windows 98, Windows ME, and Windows 2000

With USB technology, there's never any need to turn your computer off when unplugging or plugging in the DG2. When you want to use the DG2, simply close any running programs and plug it into the USB port. Your system will automatically configure itself. When you're done, you can unplug the DG2 and your computer will automatically configure for whatever soundcard is installed. In both cases, it doesn't matter if the system is on or off. For smooth automatic loading, please ensure all audio programs are closed before plugging in, or unplugging the DG2.

**Note:** when the DG2 is selected as your system's preferred audio device, no sound will come out of any speakers plugged into your soundcard. If you wish to use your soundcard instead of the DG2, either unplug the DG2 from the USB cable, or select your soundcard as preferred audio device in the *Multimedia Properties* control panel for Windows 98, or *Sounds and Multimedia* control panel for Windows ME and Windows 2000. It is not possible to use a soundcard and the DG2 at the same time.

### Windows 98

Once Windows 98 starts and the appropriate drivers have been loaded, the DG2 will automatically be set as your system's preferred audio device. To verify this, open the Multimedia Control Panel and make sure that **USB Audio Device** appears in the *Sound Playback* section under *Preferred Device*. To get to the multimedia control panel hit **Start**, then go to **Settings**, then **Control Panel**. The multimedia icon will be in the *Control Panel* window. Double click on the icon to open the *Multimedia Properties* window. In the Audio tab, under the heading *Sound Playback Preferred Device*, make sure that **USB Audio Device** appears. If it doesn't, use the scroll arrow to the right and choose **USB Audio Device**. You're now fully loaded.



Windows 98

**Note:** Some computer systems ship with an OEM version of Windows 98 that does not contain the entire generic USB driver and audio platform. If you cannot select **USB Audio Device** in the *Preferred Device* Window, please refer to the troubleshooting section at the end of this user manual for further instructions. In this situation you may not be able to select **USB Audio Device** even though the USB drivers seemed to install fine when you first plugged in the DG2.

### Windows ME

Once Windows ME starts and the appropriate drivers have been loaded, the DG2 should automatically be set as your system's preferred audio device. To verify this, open the *Sounds and Multimedia Properties* control panel and make sure that **USB Audio Device** appears in the *Sound Playback* section under *Preferred Device*. To get to the *Sounds and Multimedia Properties* control panel hit **Start**, then go to **Settings**, then **Control Panel**. The multimedia icon will be in the *Control Panel* window. Double click on the icon to open the *Sounds and Multimedia Properties* window. In the Audio tab, under the heading *Sound Playback Preferred Device*, make sure that **USB Audio Device** appears. If it doesn't, use the scroll arrow to the right and choose **USB Audio Device**. You're now fully loaded.



Windows ME

### Windows 2000

Once Windows 2000 starts and the appropriate drivers have been loaded, the DG2 will automatically be set as your system's preferred audio device. To verify this, open the *Sounds and Multimedia* panel and make sure that **USB Audio Device** appears in the *Playback* section under the *Audio* tab. To get to the *multimedia control panel* hit **Start**, then go to **Settings**, then **Control Panel**. The *Sounds and Multimedia* icon will be in the *Control Panel* window. Double click on the icon. In the *Audio* tab, make sure that **USB Audio Device** appears in the *Sound Playback* section under *Preferred Device*. If it doesn't, use the scroll arrow to the right and choose **USB Audio Device**. You're now fully loaded.



Windows 2000

### Controlling the output and volume levels

The DG2's volume and output controls can be accessed by double clicking the standard volume control icon. For most of the DG2's operations, the volume is set by the *Wave Balance* slider. To activate the *Wave Balance* slider go to **Options** and then **Properties**. In the bottom section of the *Properties* window, make sure a check appears next to *Wave Balance*. Click **OK** once you're done.



Controlling volume levels

### Installing MusicMatch Jukebox Plus

After the DG2's USB drivers have loaded, you will be ready to start recording. The DG2 works with any Windows compatible media player, although to help make things easy we've included a full version of MusicMatch Jukebox Plus. This powerful software will let you quickly rip and encode tracks from CDs, run customized playlists, and apply graphic equalization to all of your recordings. After exhaustive testing, we definitely think MusicMatch is one of the best programs around for getting superior results. To install MusicMatch Jukebox Plus please do the following:

1. Insert the MusicMatch Jukebox Plus CD into your CD-ROM drive.
2. When the MusicMatch Jukebox Plus splash screen opens, click on the option **Install Jukebox Plus** and follow the onscreen instructions.

A users manual detailing how to use MusicMatch Jukebox Plus is contained on the CD. If you wish to view the manual, simply insert the MusicMatch CD into your CD-ROM drive and select **User's Guide**. For further information and news on software updates, please visit [www.musicmatch.com](http://www.musicmatch.com).

**Note:** You don't have to run MusicMatch to use the DG2 - it will also work with any of your other favorite players, including the Windows Media Player.

## Recording from PC to MiniDisc with the DG2

**WARNING - It is important to read through these instructions carefully and to adjust the volume controls as directed. Do not at any stage place headphones on your ears without first checking that the volume controls are set to a minimum and slowly raised to a comfortable listening level.**

The DG2 has two recording modes: **continual** and **discrete**. The continual mode is for those MD recorders that require a continual digital stream to initiate their recording mechanisms and automatically track mark. The discrete mode works with certain models by playing tracks as individual digital blocks, thus supporting automatic track marking on those MD recorders that operate without needing a continual digital audio stream. If you are using a late model Sony or Aiwa portable recorder, you can use either mode. For Sharp and JVC owners, we recommend using the continual mode. For recording to home MD decks, the continual mode is also recommended. For all other recorders, we suggest trying both modes to see what provides the best results for you.

### Discrete Mode Recording

1. The toggle for switching between continual and discrete modes is located next to the USB input on the DG2. Put the switch into the **up** position to set the DG2 into discrete recording mode.
2. Before starting, make sure that the *Wave Balance* volume slider is set to a minimum. You can access the DG2's volume slider by double clicking the speaker icon at the bottom right had side of the Windows task bar.
3. Plug a set of headphones or monitor speakers into your MiniDisc recorder.
4. With the supplied TOSLINK cable, connect the DG2 to the Line-In of your MiniDisc recorder.
5. Start MusicMatch Jukebox Plus, or your favorite Windows media player, and load a selection of wav or MP3 files to be recorded.
6. If you are using MusicMatch Jukebox Plus, go to point 6 now.

If you are not intending on using MusicMatch Jukebox Plus, you'll have to verify that your preferred media player controls the *Wave Balance* slider in the DG2 Volume Control panel. Press play on your media player and open the DG2 volume control panel by double clicking on the speaker icon down in the Windows task bar at the bottom right had corner of your screen. Move the volume control up and down on the media player and watch to see if the *Wave Balance* slider moves in the DG2 Volume Control panel. If the *Wave Balance* slider does not move, your media player is not correctly controlling the DG2 and may not be running to the Windows protocol. If this is the case, you will have to manually set the volume output of the DG2 by using the *Wave Balance* slider rather than the volume control in your favorite media player. You may also consider using a media player that is Windows compliant.

7. Set the volume of MusicMatch Jukebox Plus or your favorite media player to minimum. Press record on your MiniDisc recorder. Press play on MusicMatch Jukebox Plus or your favorite media player. Your MiniDisc recorder should start recording.

8. Wearing the headphones connected to the MiniDisc recorder, start to slowly raise the volume control in MusicMatch Jukebox Plus, or your favorite media player. You will start to hear the volume increase through the headphones.
9. Make sure that you raise the volume control only to an appropriate level for your MiniDisc recorder. If you increase the volume past the signal level that the MiniDisc recorder can tolerate, it will cause distortion in your recording. Many MiniDisc recorders have a level display that lets you monitor the input signal strength.
10. You have set the levels of your DG2 for recording. You can now load a playlist and start a full session.
11. MusicMatch Jukebox Plus includes a 3 second gapping feature designed to automatically add track marks when recording to MiniDisc with an AN1 or in continual mode with the DG2. Due to the advanced design of the DG2, track marks will automatically be added during discrete mode recording without the need for a 3 second gap of silence. Make sure that you therefore disable the 3 second gapping feature in MusicMatch Jukebox Plus before recording. To do this, Start MusicMatch Jukebox Plus, click on **File**, then scroll down and click on **MiniDisc Analog Trackmarking**. The check mark will disappear to show the feature is no longer enabled.
12. During recording it not advisable to use any other applications on your system. Most MP3 players require large amounts of resources to ensure flawless MP3 decoding and playback. If you interfere with the computer during recording, it can affect MP3 decoding, which can in turn affect the quality of your recording or the addition of track marks. Read the next section for further tips on getting the best results out of your DG2.

**Note: When set in discrete mode, the DG2 automatic track marking feature is defeated by the way the Windows Media Player spools its digital audio in Windows ME. We recommend users of Windows ME use MusicMatch Jukebox when requiring automatic track marking.**

**Note: If you are noticing a large amount of track marks being randomly inserted into your recordings, or are missing the first few seconds of audio at the beginning of each track, please try recording using the continual mode. If you are still getting multiple track marks using the continual mode, please refer to the troubleshooting guide at the end of this user manual for further information.**

### Continual Mode Recording

1. The toggle for switching between continual and discrete modes is located next to the USB input on the DG2. Put the switch into the **down** position to set the DG2 into continual recording mode.
2. Before starting, make sure that the *Wave Balance* volume slider is set to a minimum. You can access the DG2's volume slider by double clicking the speaker icon at the bottom right hand side of the Windows task bar.
3. Plug a set of headphones or monitor speakers into your MiniDisc recorder.
4. With the supplied TOSLINK cable, connect the DG2 to the Line-In of your MiniDisc recorder.
5. Start MusicMatch Jukebox Plus, or your favorite Windows media player, and load a selection of wav or MP3 files to be recorded.

6. If you are using MusicMatch Jukebox Plus, go to point 7 now.  
If you are not intending on using MusicMatch Jukebox Plus, you'll have to verify that your preferred media player controls the *Wave Balance* slider in the DG2 Volume Control panel. Press play on your media player and open the DG2 volume control panel by double clicking on the speaker icon down in the Windows task bar at the bottom right had corner of your screen. Move the volume control up and down on the media player and watch to see if the *Wave Balance* slider moves in the DG2 Volume Control panel. If the *Wave Balance* slider does not move, your media player is not correctly controlling the DG2 and may not be running to the Windows protocol. If this is the case, you will have to manually set the volume output of the DG2 by using the *Wave Balance* slider rather than the volume control in your favorite media player. You may also consider using a media player that is Windows compliant.
7. Set the volume of MusicMatch Jukebox Plus or your favorite media player to minimum. Press record on your MiniDisc recorder. Press play on MusicMatch Jukebox Plus or your favorite media player. Your MiniDisc recorder should start recording.
8. Wearing the headphones connected to the MiniDisc recorder, start to slowly raise the volume control in MusicMatch Jukebox Plus, or your favorite media player. You will start to hear the volume increase through the headphones.
9. Make sure that you raise the volume control only to an appropriate level for your MiniDisc recorder. If you increase the volume past the signal level that the MiniDisc recorder can tolerate, it will cause distortion in your recording. Many MiniDisc recorders have a level display that lets you monitor the input signal strength.
10. You have set the levels of your DG2 for recording. You can now load a playlist and start a full session.
11. MusicMatch Jukebox Plus includes a 3 second gapping feature designed to automatically add track marks when recording to MiniDisc with an AN1 or in continual mode with the DG2. When enabled, this feature will automatically add three seconds of silence between tracks in your playlist, assisting your MD recorder to add a track mark automatically. Make sure that the 3 second gapping feature in MusicMatch Jukebox Plus is selected before recording. To do this, Start MusicMatch Jukebox Plus, click on **File**, then scroll down and click on **MiniDisc Analog Trackmarking**. A check mark will appear to show the feature is enabled.
12. During recording it not advisable to use any other applications on your system. Most MP3 players require large amounts of resources to ensure flawless MP3 decoding and playback. If you interfere with the computer during recording, it can effect MP3 decoding, which can in turn effect the quality of your recording. Read the next section for further tips on getting the best results out of your DG2.

## Tips for getting the best results with your DG2

The DG2 is a high fidelity, digital medium for transferring audio between a PC and MiniDisc recorder. Because it's digital, it will only ever send what information it receives and cannot therefore effect the quality of your recording in any way. If you're finding distortion in a recording, there are a couple of possible reasons.

The first is that the original source MP3 or wav file contains distortion, or is being corrupted during playback. Because the DG2 plays these files exactly, any anomalies in an original recording, or that occur during playback, will also be played. To reduce the likelihood of distortion in your source file, make sure not to use your computer for any other tasks during ripping, MP3 compression, or playback. Contact the vendor of your ripper and encoder to make sure you meet their minimum system requirements and are using the program correctly.

If your source file does not contain any distortion, another place that it can be corrupted is in the MiniDisc recorder. Make sure that the DG2's output level is not set too high. Having the output of the DG2 set higher than the maximum input level of your MiniDisc recorder can cause degradation in sound quality. Most MiniDisc recorders have an input level indicator that allows you to monitor the strength of the input signal. Verify that the MiniDisc recorder is not being overloaded. If distortion is still occurring, make sure that the lens of your MiniDisc recorder is clean.

The DG2 automatically adds track marks on supported MD recorders without the need for a two or three second gap of silence between each track in the discrete recording mode. Many media players offer a gapping facility as a plug-in. Make sure to disable any gapping feature before recording with the DG2 in the discrete recording mode. MusicMatch Jukebox Plus includes a special feature for users that record using an AN1 or in the continual record mode with the DG2, that automatically adds a 3 second gap of silence between tracks during playback. To turn the MusicMatch Jukebox Plus gapping feature off, click on **File** in MusicMatch Jukebox Plus, then scroll down and click on **MiniDisc Analog Trackmarking**. The check mark will disappear to show the feature is disabled.

## Troubleshooting Guide

In this section are various suggestions for problems or issues you may encounter using the DG2 including:

1. My computer doesn't seem to have all the right drivers in Windows;
2. My DG2 looked to install fine, but I can't select it as preferred device;
3. My DG2 fails to set itself as preferred audio device automatically;
4. My DG2 seems to be putting trackmarks all over the place;
5. My MD recorder is cutting off a fraction of a second at the beginning of some tracks;
6. My MD recorder is cutting off seconds at the beginning of each new track; and

### 1. My computer doesn't seem to have all the right drivers in Windows.

*Problem:* After plugging in your DG2 for the first time, Windows doesn't seem to automatically default to where the drivers should be and you can't seem to find them on the Windows CD either.

*Fix:* A lot of the large branded computer manufacturers ship their systems with a cutdown OEM version of Windows that does not always include all the USB audio components. Because this is specific to each manufacturer, you will need to contact the one who built your system and ask them to send you a USB audio upgrade to bring your version of Windows up to the same standard as the retail version.

The DG2 does not need any special device drivers, using only the following generic Windows ones that are usually stored in the listed directories for each USB component:

C:\win\inf\usb.inf - driver location for USB Composite Device

C:\win\inf\hiddev.inf - driver location for USB Human Interface Device

C:\win\inf\wdma\_usb.inf - driver location for USB Audio Device

These drivers are all that is needed to operate the DG2.

## 2. My DG2 looked to install fine, but I can't select it as preferred device.

*Problem:* Your DG2 went through most of the driver install, or all of the driver installation fine, but now when you try to select it in the Playback section of the multimedia control panel, there doesn't appear to be any option for USB audio device.

*Fix:* The symptom occurs where large branded computer manufacturers ship their systems with a cutdown OEM version of Windows that does not always include all the USB audio components. Because this is specific to each manufacturer, you will need to contact the one who built your system and ask them to send you a USB audio upgrade to bring your version of Windows up to the same standard as the retail version. The DG2 does not need any special device drivers, using only the following generic Windows ones that are usually stored in the listed directories for each USB component:

C:\win\inf\usb.inf - driver location for USB Composite Device

C:\win\inf\hiddev.inf - driver location for USB Human Interface Device

C:\win\inf\wdma\_usb.inf - driver location for USB Audio Device

Even though these drivers may be present on your system, if the OEM version of Windows you are running does not contain all the underlying USB audio components, you will not be able to select USB Audio Device as the preferred playback device in the Multimedia Window. You will need to contact the supplier of your system to obtain an upgrade patch that brings your entire USB audio system up to the minimum specification of the retail version of Windows.

## 3. My DG2 fails to set itself as preferred audio device automatically.

*Problem:* When you plug in the DG2, it is not automatically being configured as preferred audio device.

*Fix:* This occurs if a system's soundcard is ISA based – common for standard on board audio solutions (since Windows cannot automatically take a setting away from an ISA soundcard and give it to the DG2).

It will also occur if you are running an audio program when you plug in or unplug the DG2. Make sure to therefore close all audio programs before doing this. You may need to configure your computer manually by selecting **USB Audio Device** in the *Multimedia Control Panel* or the *Sounds and Multimedia Properties* control panel. See the section "Checking that the DG2 is selected as preferred device in Windows 98, Windows ME, and Windows 2000" earlier in this manual for further details.

## 4. My DG2 seems to be putting trackmarks all over the place.

*Problem:* You've installed the DG2 and it seems to be recording fine, except there are track marks appearing all over the place.

*Fix:* Some USB host controllers do not function within USB specification. Also Windows, in conjunction with other hardware in your system, may be consuming all the isochronous bandwidth of the USB bus. Both of these interfere with the data flowing to the DG2, causing it to randomly insert track marks.

The main instances where this occurs is if:

- USB frame rates are out of specification - isochronous data transfer (required for audio) is not possible via USB with a frame rate that is too fast or too slow.
- Controllers do not enumerate devices correctly - some controllers do not send USB resets at the appropriate times or may enumerate one part of a composite device.
- Corrupting audio data - some USB controllers introduce artifacts into sound data (i.e. CATC traces of USB data have shown non-zero values in data that should be all zeros).

To solve this problem, we firstly suggest recording using the DG2's continual mode setting. Also make sure you are not running any other programs in the background when trying to record with the DG2 - anything that causes a lot of hard disk access can effect the data flowing down the USB bus. Virus checking programs that continually run in the background are particular bad. Some drastically effect the isochronous data flow down the USB bus and starve the DG2 of data. It is therefore important to disable all virus checking programs if you are getting multiple track marks. Also, make sure that you are running the most up to date drivers for your graphics cards and modems. If you are on a network, it is advisable to log off.

**Note:** If you are using a laptop or notebook computer, the data flowing to the DG2 can be severely effected by the processing power management of the CPU. Ensure that in the *System* control panel your computer is set to **Desktop**. To verify this, go to *Start*, then *Settings*, then *Control Panel*. Click on *System* and go to the *Performance Tab*. In *Performance*, click on *File System* and make sure your laptop is set to **Desktop** and not **Server**. Some laptops are not suitable for the decoding and recording of MP3 via USB due to the variable operating speed of their CPU and other power management features.

## 5. My MD recorder is cutting off a fraction of a second at the beginning of some tracks.

*Problem:* When recording through the DG2, your MD recorder seems to be losing a fraction of a second worth of audio at the beginning of some tracks.

*Fix:* If the MP3 or audio file you are trying to record starts with a series of rapid attacks (such as loud drum beats etc) it may take a fraction of a second for your MD recorder to set its digital recording levels. This is a normal function of the MD recorder. To overcome this, it is suggested you record in the continual mode.

## 6. My MD recorder is cutting off seconds at the beginning of each new track.

*Problem:* When recording through the DG2, your MD recorder seems to be cutting off a second or more worth of audio at the beginning of each new track.

*Fix:* This occurs on those MD recorders that do not support discrete mode recording. Make sure to set your DG2 for continual mode recording.

---

Further information on all of these topics is available on our website at [www.xitel.com](http://www.xitel.com).

**MD-PORT™ DG2**  
**MAC USERS MANUAL**

- OS 9.04 AND UP



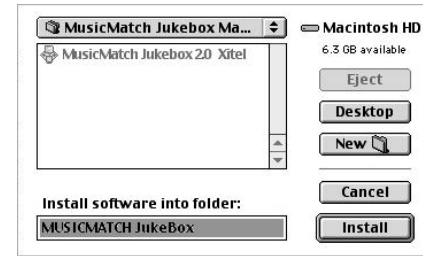
## Getting started

1. Before plugging in your DG2 for the first time, you will need to ensure that your computer is running the necessary operating system and Apple Audio Extensions.
2. To verify that your computer is running the correct operating system, close all open applications. Click on the apple icon in the top right had corner of the screen. Scroll down and find the first item in the pop up menu called *About This Computer* and click on it. A window with details of the operating system currently running on your computer will now open. Verify that in the Version line, a number **9.0.4** or higher appears. If this, or a higher number appears, you're running an operating system that is compatible with the DG2. If you're running an earlier version of the Mac operating system, your DG2 may not operate.
3. To verify that your computer is running the necessary Apple Audio Extensions, close all open applications. On the desktop, find the icon that corresponds with your Mac hard drive. Double click on it. A window will open listing all the files and folders on your hard drive. Scroll down and find the *System Folder* icon. Click on the arrow to the left of the *System Folder* icon so that all the folders contained in the *System Folder* become visible. Scroll down until you find the *Extensions* folder and click on the arrow to the left of the folder icon. In the files that are listed in the *Extensions* folder, scroll down and verify that a file *Apple Audio Extension* appears. Check that the version of this file is **1.0.5** or higher. If a version column does not appear, go to **View** in the top navigation bar and select **View Options**. Place a check next to **Version** in the *Show Columns* section. Click on **OK**. A version column will now appear and let you check the version of the *Apple Audio Extension* file running on your computer. If your system is not running Apple Audio Extension **1.0.5** or higher, the DG2 may not operate.
4. After verifying your computer has the necessary operating system and audio extensions, close all applications. Plug the supplied USB cable into a USB port on your computer. Now plug the DG2 into the other end of the USB cable. Don't plug the DG2 into a USB hub, as other devices on the hub may effect the digital audio data, causing unwanted pops and clicks in your recordings.
5. Your computer will now automatically initiate the DG2 and set it as preferred playback device. After a few seconds, you should notice that no audio will come out of your computer speakers. If you can still hear sound coming out your computer speakers, verify that you're running at least the minimum operating system and apple audio extensions requirements. If you are, restart your system with the DG2 plugged in to let your system initialize it. That's all there is to installing the DG2. Now head on to the next section, "Loading MusicMatch Jukebox Plus."

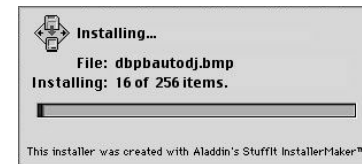
## Loading MusicMatch Jukebox Plus

Contained on the MusicMatch CD is a copy of MusicMatch Jukebox Plus, a powerful program that will let you compile and play various forms of computer and CD audio. It will also let you rip tracks from audio CDs and turn them into your own MP3 files. While your DG2 will work with any of your other favorite media players, we suggest using MusicMatch Jukebox Plus because of it's track marking feature which assists MD recorders in automatically adding track marks. To install MusicMatch Jukebox Plus:

1. Insert the CD into the CD drive and when the icon that corresponds to the CD appears on your desktop, double click on it. This will open a window that contains the Music Match Jukebox installer.
2. Double click on the icon labeled **MusicMatch Jukebox 2.0 Xitel**. This will install MusicMatch Jukebox on your hard drive.



3. If you want, you can choose a different folder, or create a new folder, into which the installer will load MusicMatch Jukebox. If at any time during installation you're prompted to type in a registration key, enter the code that appears on the outside of your CD cover. This will unlock all the advanced features of MusicMatch Jukebox Plus.



4. After the installation is complete, you should restart your Mac.



If during installation a prompt didn't come up to enter your registration code, simply start MusicMatch Jukebox and go to **Register** and then **Enter Key**. Now type in the key that appears on the outside of your CD cover. Keep this in a safe place, as you may need it for future upgrades or if you have to install the software again. Do not share this key with anyone, as it is your own personal one.

## Recording to MiniDisc with the DG2

**WARNING - It is important to read through these instructions carefully and to adjust the volume controls as directed. Do not at any stage place headphones on your ears without first checking that the volume controls are set to a minimum and slowly raised to a comfortable listening level.**

1. With the DG2 plugged into your computer's USB port, go to the system audio volume control and set it to **maximum**.
2. Open up MusicMatch Jukebox Plus or the media player you intend using. Before starting anything, make sure that the player's volume controls are set to **minimum**.
3. Plug a set of headphones or monitor speakers into your MiniDisc recorder.
4. With the supplied optical TOSLINK cable, connect the DG2 to the Line-In of your MiniDisc recorder.
5. In MusicMatch Jukebox Plus, load a selection of MP3 files or CD music that you want to record.
6. Make sure that the volume control of your media player is still set to **minimum**, then press record on your MiniDisc recorder. Now press play in MusicMatch Jukebox Plus.
7. Wearing the headphones connected to your MiniDisc recorder, start to slowly raise the volume control in MusicMatch Jukebox Plus. You'll start to hear the volume increase through the headphones.
8. Make sure that you raise the volume control to an appropriate level for your MiniDisc recorder. If you increase the volume past the signal level that your MiniDisc recorder can tolerate, it will cause distortion in your recording. Many MiniDisc recorders have a level display that lets you monitor the input signal strength.
9. You have now set the levels of your DG2 for recording. You can now load a playlist and start a full recording session.

**Note: During recording it is advisable not to use any other applications on your system. Most MP3 decoders require large amounts of resources to ensure flawless MP3 decoding and playback. If you interfere with the computer during recording, it can effect MP3 decoding, which can in turn effect the quality of your recording.**

**Note: The Mac operating system continuously spools and outputs digital audio as one continuous file. This ensures the highest possible fidelity, however it also means that the DG2 cannot automatically insert track marks. To assist your MD recorder in inserting track marks, it is suggested that you use the 3 seconds of silence gapping feature in MusicMatch Jukebox Plus.**

## Automatic Track Marking

In order to assist your MD recorder in adding track marks, you can use the **Analog Minidisc Trackmarking** feature that comes standard with MusicMatch Jukebox Plus. By enabling this feature, a three-second gap of silence is automatically inserted between tracks, helping your MD recorder insert track marks. To verify that this feature is turned on, in MusicMatch Jukebox Plus go to **Edit** then **Preferences**. Down the bottom of the screen is a selection box next to the title **Minidisc Analog Trackmarking**. Put a check in this box to enable the gapping feature – you should find that it already has a check by default. If you don't want to use this feature, click on the selection box to remove the check mark.

Some MD recorders add a ghost track that consists of no audio data when using this feature. This is a function of the MD recorder's internal recording mechanism and not your DG2. Any ghost tracks can be easily removed by using the delete function of your MD recorder.

## Technical Support

For all technical support inquiries, please visit our website at [www.xitel.com](http://www.xitel.com). If you can't find an answer to your problems there, drop us an email at [support@xitel.com](mailto:support@xitel.com). We will need the following details so that our tech guys can quickly provide assistance.

1. Serial number on the base of your MD-Port
2. Details of your computer including operating system
3. A step by step explanation of the problems you're experiencing – the more detail, the easier it is for us to help you.

## Warranties and Disclaimer

The actual physical dimensions and capabilities of the DG2 may differ slightly from illustrations and descriptions contained within this manual. Every effort has been made to ensure that electrical functionality has been maintained wherever possible. Xitel reserves the right to change specifications of the DG2 or the bundled software without notice. Xitel warrants the DG2 against defects in material and workmanship for one year from the date of original purchase from an authorized dealer or Xitel representative. This warranty only applies to the original purchaser and is not transferable. At Xitel's sole discretion, proof of purchase and/or the DG2's serial number will be required to initiate any warranty claim. This warranty does not cover any incompatibilities due to the user's computer, hardware, software or any other related system configuration the DG2 is installed with. This warranty does not cover any damage caused by negligence, non-authorized modifications, service by any other persons other than Xitel, or if the product has been damaged by accident, abuse, misuse, negligence, or misapplication. Xitel is not responsible for any lost profits, lost savings or other incidental or consequential damages arising out of the use of, or inability to use, this product. That includes damage to property and, to the extent permitted by law, damages for personal injury. This warranty is in lieu of all other warranties including implied warranties of merchantability and fitness for a particular purpose to the extent permitted by law.

### USA - FCC Part 15 Class B Registration Warning

Product Name: MD-Port USB Digital to Analog Converter  
Product Model Number: DG2

This device complies with part 15 of the FCC Rules. Operation is subject to the following two conditions: (1) This device may not cause harmful interference, and (2) this device must accept any interference received, including interference that may cause undesired operation.

### Canada – ICES-003 Conformity

This class B digital apparatus complies with Canadian ICES-003  
Cet appareil numérique de la class B est conforme a la norme NMB-003 du Canada

### Europe – CE Conformance Information

Application of Council Directive(s)	89/336/EEC& 92/31/EEC
Standards to which Conformity is Declared	EN 50081-1, EN 50082-1, EN 55022, EN 61000-4-2, EN 61000-4-3 & EN 61000-4-4
Manufacturer:	Xitel Pty Limited
Type of Equipment:	MD-Port USB Digital Converter
Model No:	DG2

### Australia – C-Tick Conformity

This class B digital apparatus complies with the Australian Communications Authority regulations.

## Technical Support

For any further technical support, please email [support@xitel.com](mailto:support@xitel.com). Make sure to include a full description of your system and the exact nature of the problem you are experiencing.

---

### Copyright

MD-Port™ DG2 and Xitel™ are trademarks of Xitel Pty Limited. MusicMatch™ and MusicMatch Jukebox Plus™ are the trademarks of MusicMatch Inc. All other trademarks are the trademarks or registered trademarks of their respective owners. Except as permitted under the United States Copyright Act (1976), no part of this publication or accompanying software may be reproduced or distributed in any form, or by any means, without the prior written permission of Xitel Pty. Limited or MusicMatch Inc.  
© Copyright 2001, Xitel Pty Limited Australia.